

STRONGER TOGETHER

Fostering a Thriving Olympic Region, One Partnership at a Time

Funding Initiative | June 2023 - December 2024

Olympic Community of Health



Olympic
COMMUNITY *of* HEALTH
Clallam | Jefferson | Kitsap

TABLE OF CONTENTS



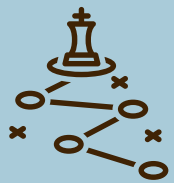
Slide 3.....	Funding Initiative Overview
Slide 4.....	Stronger Together Funding Initiative Timeline
Slide 5.....	Stronger Together Key Themes
Slide 6.....	Summary of Funding Projects
Slide 7.....	Summary of Successes
Slide 8.....	Summary of Project Sustainability
Slides 9-24...	Summary of Funded Projects (alphabetical)
Slide 25.....	Conclusion

STRONGER TOGETHER | FUNDING INITIATIVE

From June 2023 through December 2024, [OCH funded nearly \\$2 million to support sixteen projects](#) under the Stronger Together funding opportunity. The Stronger Together funding opportunity:



- Supported partner-led efforts through collective action



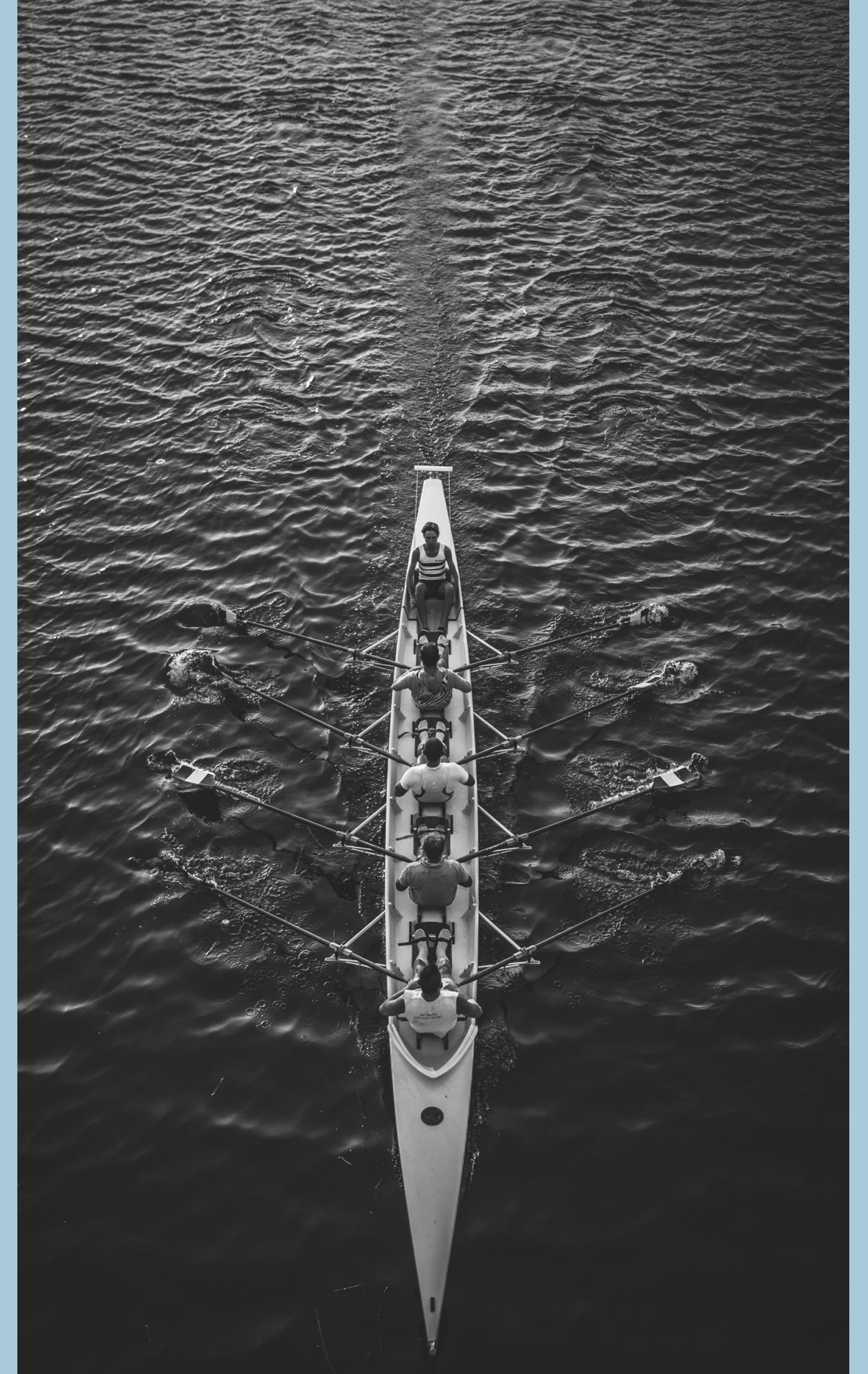
- Moved the [OCH 2022-2026 Strategic Plan](#) forward through partner-led action



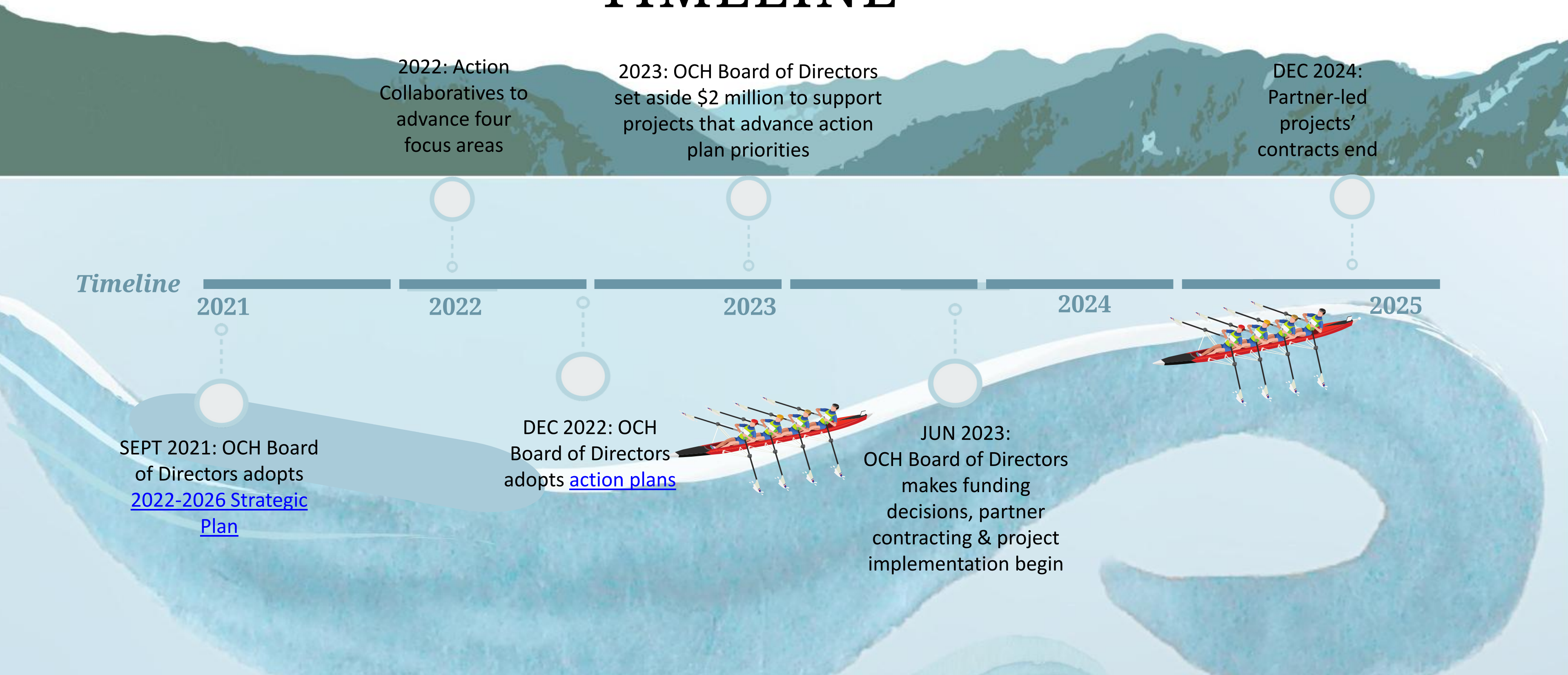
- Supported regional health transformation efforts, ultimately working to advance the vision of healthy people, thriving communities



- Uplifted collaboration and partnerships



STRONGER TOGETHER | FUNDING INITIATIVE TIMELINE

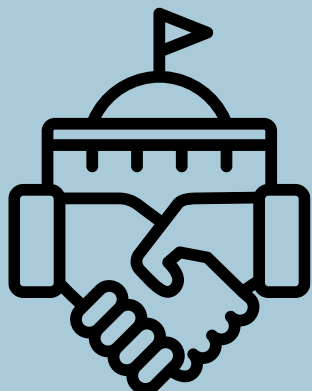


STRONGER TOGETHER KEY THEMES

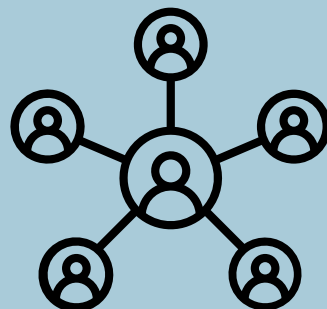
6 PROJECT GOAL AREAS:



Collaboration...
Partner with at least one other organization or Tribe



Policy & systems
change focus



Expanding the table...
Opportunity to expand and deepen partnerships

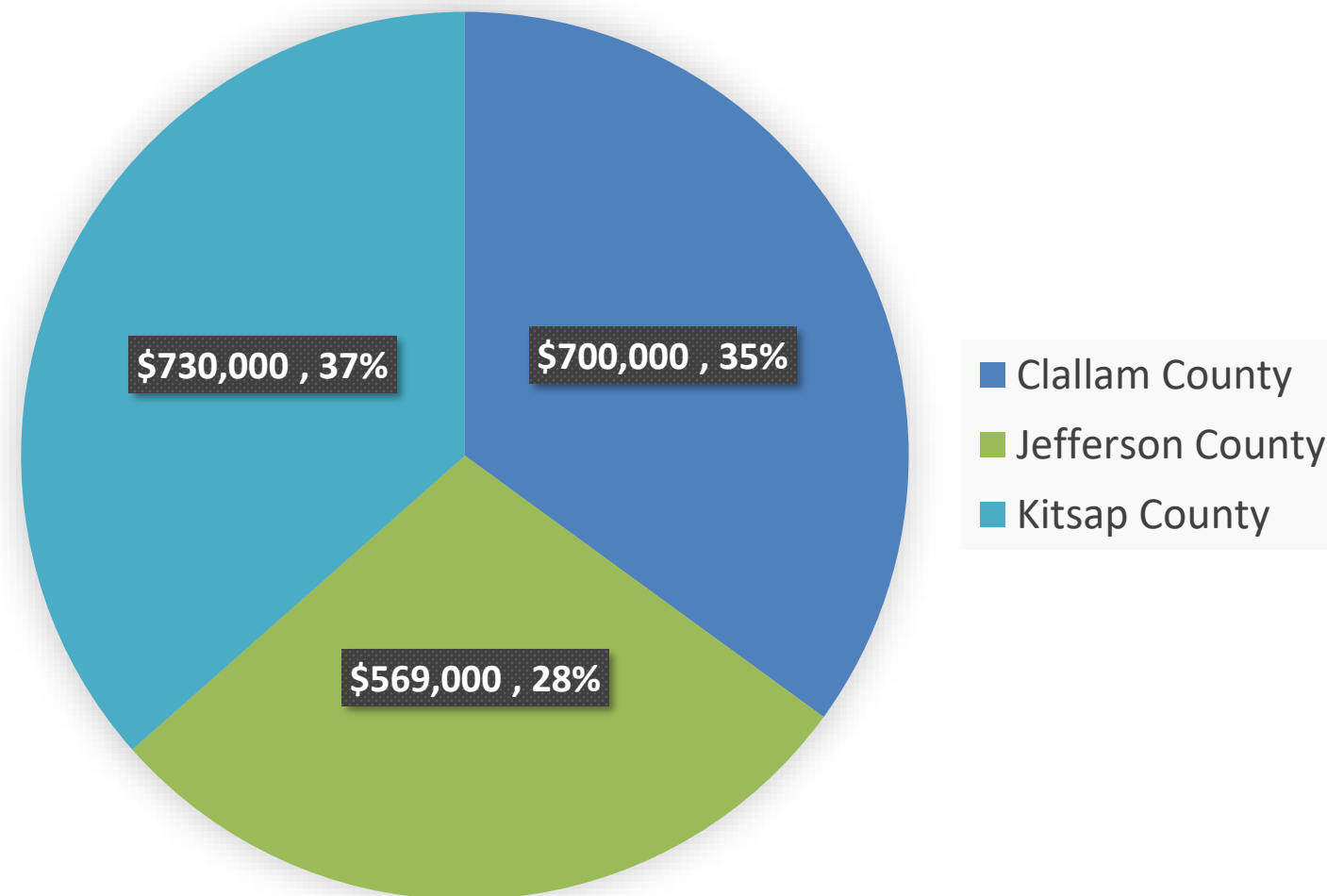
Address & reduce stigma of substance use disorder through community-wide education, youth engagement, and policy & systems change.	Partner with hospitals to ensure access to appropriate respite, supportive, transitional, or long-term housing for those transitioning out of care.
Increase the availability of long-term and safe transitional and respite housing options for people throughout their recovery journey.	Identify and implement creative approaches to address the health-serving workforce crisis.
Embed substance use disorder services in mobile units and jail programs including connecting people to respite and transitional housing.	Partner with schools and colleges to create pathways to address local workforce shortages.

FUNDED PROJECTS

[OCH funded sixteen partner-led projects](#) across the Olympic region and different partner types. All six project goal areas were addressed.

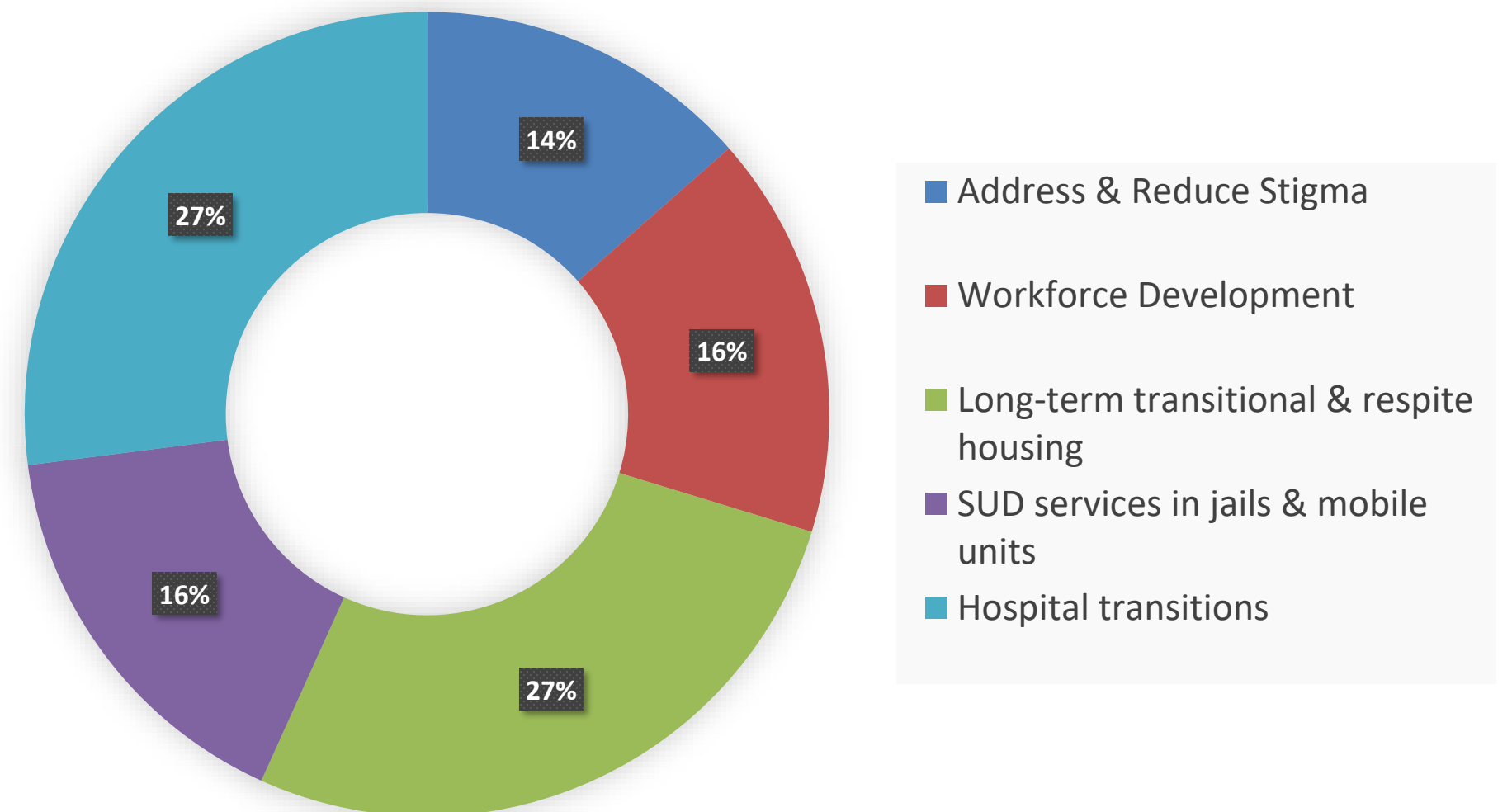
By meaningfully supporting these projects, OCH maximized the work towards the shared goal, **“improve individual and population health and advance equity by addressing the determinants of health.”**

Funding by County



Total funding: \$1,999,875

Funded projects by project area goal



SUMMARY OF SUCCESSES



- ✓ **Increased collaboration**
Multiple projects cite expanded and deepened collaboration as a top success.
- ✓ **Partnerships**
All projects cite improved and/or broadened partnerships as a top success.
- ✓ **Increased access to services**
Most projects increased access to needed services based on local priorities.

“OCH’s collaboration has strengthened our ability to address critical care gaps in services and expand access to care for individuals.”

-Funded project partner

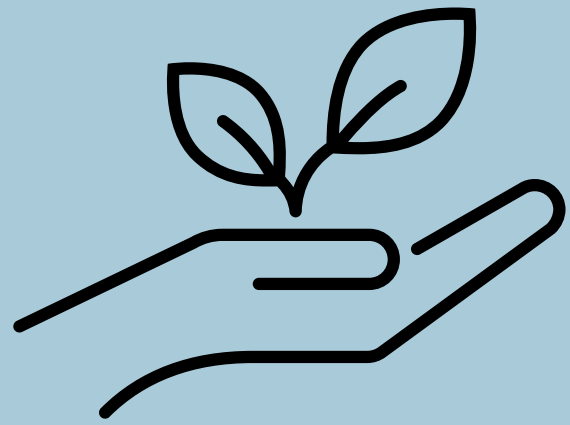
“This has been a wonderful opportunity to strengthen partnerships. Working together toward a common goal, we will create greater impact.”

– Funded project partner

“The opportunity to serve our community through these programs would not be possible without the support of OCH.”

– Funded project partner

SUMMARY OF PROJECT SUSTAINABILITY



“The seed money that you invested will carry forward and is actively changing the lives of local young people for the better!”
- *Funded project partner*

Funding was intended to support innovation in policy and systems change efforts in the region. Projects with a clear path towards sustainability were prioritized under this funding opportunity.



All projects had plans to continue activities through 2025.



Approximately half of projects invested in clear infrastructure to ensure continued activities for the long-term.

BUILDING HEALTH CARE CAREER PATHWAYS

East Jefferson County | Amount: \$150,000

Project aims included:

1. Create and implement resources for public schools to build health care career pathways.
2. Introduce students to health care careers early on and build lasting infrastructure to connect students to jobs and meet health care workforce shortages.

Project partners: Jefferson Healthcare, Port Townsend School District, Chimacum School District, Quilcene School District, Brinnon School District, East Jefferson Fire Rescue, Brinnon Fire Rescue, Quilcene Fire Rescue.

Key successes:

- 488 student participants, serving 54% of all 8-12 graders in East Jefferson County.
- Strong partnerships will maintain career pathways:
 - 3 school districts continuing 8th Grade Health Care Career Explorer Event
 - 9th Grade Career Choices course will include healthcare career curriculum
 - 2 school districts continuing health care science classes



“I highly recommend [this program] to other high school students interested in health care career fields. I am ever so grateful for this opportunity to learn and explore possible career paths.”
– *Chimacum School District Student*

CAREER LADDERS

Clallam County | \$200,000

Project aims included:

1. Create a career ladder for health care workers to “upskill” from registered to certified medical assistants (MA-R to MA-C pathway course).
2. Generate interest in allied health fields with local high school students to demonstrate existing career pathways and ladders and to “grow our own” workforce.

Project partners: North Olympic Healthcare Network, Peninsula College

Key successes:

- First cohort began January 2025
- Over 1,461 high school students reached through local engagement to spread awareness and interest in medical assistant pathway
- Additional employers and partnership agreements formed
- Developed structured onboarding & internal career ladder to support retention & growth at North Olympic Healthcare Network with opportunity for shared learning across employers

WHAT DOES A MEDICAL ASSISTANT DO?



Medical Assistants (MAs) are a vital part of a patient's care team. They fill several clinical and administrative roles in a variety of healthcare environments and work directly with providers and patients in delivering quality care and ensuring patient safety. It is a position with a great deal of responsibility. The Medical Assisting field is expected to grow 14-18% by 2030—much faster than the national average for all occupations—and local demand for MAs remains high at clinics like North Olympic Healthcare Network. Interested in a career as an MA? Visit pencol.edu/program/medical-assisting to learn about Peninsula College's Medical Assisting program.



CLALLAM COUNTY IN JAIL SUBSTANCE USE DISORDER SERVICES



“Thank you for seeing me when I was at my worst. I’m out of jail now and going to outpatient treatment. My kids have a dad and I owe a lot of that to you guys.”

-Former service recipient

Clallam County | \$100,000

Project aim includes:

1. Expand partnership to offer treatment services at jail for incarcerated individuals with substance use disorder.
2. Services include assessments, individual therapy, intensive case management, and referral services in collaboration with jail staff.

Project partners: Olympic Personal Growth, Clallam County Sheriff’s office, Department/Corrections Facility.

Key successes:

- Post incarceration engagement in care increased from 35% to 55%, demonstrating improved access to support services
- Client success stories of improved family relationships and maintained recovery
- Limited services will continue through 2025 in commitment to partnership

COMMUNITY MEDICAL RESPITE

Kitsap County | \$225,000

Project aim included:

1. Provide 22-bed medical respite in Kitsap County for those transitioning out of inpatient care.
2. Offer medical, behavioral health, pharmacy, outpatient SUD, social, and nutrition services.

Project partners: Peninsula Community Health Services, Virginia Mason Franciscan Health, Kitsap Public Health District, City of Bremerton, Kitsap Mental Health Services, Bremerton Police Department, Bremerton Fire Department.

Key successes:

- Preparing for “mini-respite” services at an alternate facility in early 2025 to address construction delay challenges
- Medicaid billing planned to begin mid-2025 to ensure long-term sustainability
- Embedded medical and behavioral health clinic services in addition to daily respite services

Medical respite provides individuals access to transitional housing while they recover from health crisis, reduces health care costs and strain on the health care system, and increases the availability of hospital beds for those who need acute care.

EAST JEFFERSON FIRE RESCUE CARES



CARES (Community Assistance, Referral, and Education)

East Jefferson County | \$130,000

Project aims included:

1. Continue CARES team specialty unit responding to behavioral health related crises in East Jefferson.
2. Respond to individuals where they are, providing field-based care, enhancing access to care, and reducing burden on emergency medical services as well as costly emergency room visits.

Project partners: East Jefferson Fire Rescue, Believe in Recovery

Key successes:

- Program launched in 2023 and has secured diverse funding streams, currently operating with four grants to sustain and expand operations through 2025 and beyond.

“We could not have achieved our success without the steadfast support of OCH.

Their guidance, resources, and commitment to fostering community health have been instrumental in helping CARES fulfill its mission.”

-EJFR CARES Team

EXPANDING SUD SERVICES IN SCHOOLS & JAILS THROUGH MOBILE HEALTH CLINIC



“[NOHN’s] dedication to outreach, trauma-informed approach, and focus on rapport-building have been truly outstanding.”
-Community Partner

Port Angeles | \$275,000

Project aims included:

1. Expand mobile health clinic (MHC) operations to include Peninsula College and continued services at Port Angeles School District.
2. Embed opioid treatment coordination and education in mobile units.
3. Develop community events and trainings to combat stigma.
4. Facilitate warm handoffs for individuals released from jail.

Project partners: North Olympic Healthcare Network, Port Angeles School District, Clallam County Jail, Peninsula College

Key successes:

- Established MHC Coordinator ensuring program continuation and expansion
- 397 behavioral health and 16 primary care visits via MHC; 18 individuals connected to medical home
- Expanded outreach activities to reach youth and additional community sites
 - 72 SUD education sessions reaching 4,979 people
 - 37 referrals to SUD services
 - Strengthened internal trainings to address SUD stigma
 - 2nd annual event with over 150 attendees

HEALTHCARE CAREER CAMP



Kitsap County | \$21,875

Project aims included:

1. Expose underrepresented high school-aged youth to health care career and employment opportunities.
2. Pilot Healthcare Career Camp to prompt stations featuring different health care careers. Students will be tracked for outcomes after graduation and engagement in secondary education to determine project efficacy.

Project partners: Olympic College, Marvin Williams Recreation Center, Virginia Mason Franciscan Health

Key successes:

- 108 registrants, 79 attendees
- 100% of attendees completed full event
- 97% of students “extremely” or “very” satisfied with event
- 98% of students would like to be invited to attend a future event
- 80% of students requested an Olympic College advisor follow up with them to learn about healthcare pathways
- 95% of volunteers said students were engaged and they made an impact

“Student engagement was phenomenal. I love that there were so many health care career pathways represented.”

-Post project survey response



KITSAP FIRE CARES

CARES (Community Assistance, Referral, and Education)

Kitsap County | \$134,000

Project aim included:

1. Embed mobile SUD services within existing and planned Kitsap-based Fire CARES programs.
2. Eliminate barriers to treatment, meeting individuals in the field at their time of highest need.

Project partners: Central Kitsap Fire & Rescue, Poulsbo Fire Department, South Kitsap Fire & Rescue, Bainbridge Island Fire & Rescue, Kitsap Recovery Center

Key successes:

- 59 individuals directly connected to detox and treatment (34 transported to detox; 25 guided to in and outpatient SUD treatment)
- 70% reduction in 911 use post CARES service
- Project will continue through at least 2025 using remaining OCH and 1/10th funds while proactively seeking alternative funding to continue services beyond 2025

“Through referrals from frontline 911 crews, [we have] made an impact: directly connecting 59 individuals to detox and treatment services who would have otherwise fallen through the cracks. These citizens represent lives redirected, hope restored, and community healing. The OCH [funding] made this possible.”
– Funded Project Partners

LEAD IN JEFFERSON COUNTY

LAW ENFORCEMENT ASSISTED DIVERSION



East Jefferson County | \$100,000

Project aim included:

1. Create an integrated approach that unites law enforcement, behavioral health, and community organizations.
2. Individuals experiencing behavioral health needs receive appropriate care and support, diverting arrests, reducing incarceration rates, fostering a healthier and more supportive community.

Project partners: Believe in Recovery, Port Townsend Police Department, Jefferson County Sheriff's Office, Jefferson County Prosecuting Attorney, Jefferson Associated Counsel, Olympic Community Action Programs, Jefferson County Jail

Key successes:

- 70 unique individuals served (Sept 2023-Aug 2024)
- 3,147 client contacts (Sept 2023-Aug 2024)
- Client outcomes show reduced criminal justice involvement and improved quality of life

NORTH KITSAP RECOVERY RESOURCE CENTER

North Kitsap County | \$200,000

Project aims included:

Create a friendly, accessible hub where people with substance use disorder can access a broad range of no cost services, ultimately improving health and well-being of participants.

Project partners: City of Poulsbo (H3, police, court), AMFM Healthcare, Believe in Recovery, Gambit Recovery, Kitsap Homes of Compassion, Kitsap Mental Health Services, Suquamish Tribe

Key successes:

- 188 unique individuals assisted (Oct 2023-Dec 2024)& received support and services at the center, most notably:
 - 72 people received SUD treatment
 - 64 people engaged in case management
 - 48 people connected to housing & housing assistance
 - 42 people received mental health counseling
- Police and courts report significant effects on criminal justice involvement
- Funded through 2025 and the City of Poulsbo has committed to keeping the center open

Vision: Recovery services are available in a loving, respectful, and timely way to those requesting assistance in Kitsap County, along with the resources and support needed for people to reach their full potential.



NO WRONG DOOR TO ACCESS SERVICES



Olympic Peninsula Community Clinic will continue to provide services in Forks jail and expand services on the west end. Current services include outreach, intensive case management, co-response with local law enforcement, and SUD services.

Forks | \$75,000

Project aim included:

1. Expand SUD services to Forks to ensure that community members have easy access to timely treatment and continuous engagement with REDisCOVERY team.
2. Aim to prevent overdoses, reduce recidivism, and strengthen partnerships.

Project partners: Clallam County Health & Human Services, Olympic Peninsula Community Clinic, Forks Police Department, City of Forks

Key successes:

- 397 SUD-P contacts (Aug 2023-Oct 2024)
- 40 completed assessments; 96% resulted in corresponding bed date and 25 participants successfully placed in inpatient treatment
- Broadened partnerships on west end



“Before training, I didn’t even realize some of the words I was using were stigmatizing. It really opened my eyes and made me think about how I talk to and about people. Now, I’m trying to be more mindful and use language that’s more respectful and supportive.”

-Funded Project Partner Staff

PERSON FIRST MODELING AT THE MARKET

Port Angeles | \$50,000

Project aim included:

1. REAL Team staff co-located at the Port Angeles Food Bank Market to model person-first language to combat stigma of substance use disorder.
2. Community education events to facilitate discussion and education to combat community stigma.

Project partners: Port Angeles Food Bank, Reflections Counseling Services Group

Key successes:

- Hosted 4 stigma trainings reaching 59 individuals
- Distributed over 1,000 boxes of Narcan and educated over 300 individuals on appropriate use
- Built team buy-in to address stigma

STIGMA BUSTERS



“I feel welcome at The Nest.
Finally, a space in town where
young people are not judged and
feel support.”
-Youth testimonial

East Jefferson County | \$100,000

Project aim included:

1. Create a stigma free community where individuals can feel their shared humanity and access the support they need.
2. Key project activities include uplifting The Nest as a supportive community space, empowering young voices, embedding SUD peer counselor at The Nest, sharing resources, and launching 18-25 affordable, safe housing program.

Project partners: OWL360, Believe in Recovery, Mandala Center for Change, Jefferson County Juvenile Services, Recovery Café, Jefferson County Public Health

Key successes:

- 180 events hosted reaching over 1,345 attendees
- Formed Resilience Club, a support group of youth and young adults
- Create and promote education and awareness to combat SUD stigma
- Secured funding to support activities through 2025

RIGHT CHOICE & EAGLES WINGS



Do you need Anger Management or Domestic Violence Classes?

Eagle's Wings & The Right Choice have teamed up and can offer participants **FREE** classes.

Contact Ariana Miller in the office at 360-627-8547 and we can help!

“It helped me so much to know that my rent was covered. It allowed me to focus on my recovery.”
-Treatment Participant

Kitsap County | \$100,000

Project aimed included:

1. Provide wrap-around services to support individuals through their recovery journey.
2. Combine transitional housing and SUD counseling, domestic violence, and anger management classes to make a comprehensive program and provide additional housing opportunities to participants. Ultimately working to reduce homelessness and recidivism.

Project partners: Eagles Wings Coordinated Care, The Right Choice Counseling

Key successes:

- 27 referrals and enrollment into classes
- 11 housed participants; 8 successfully remained housed; 3 obtaining permanent housing
- 89% non-recidivism for those served

WORKFORCE DEVELOPMENT



East Jefferson County | \$89,000

Project aim included:

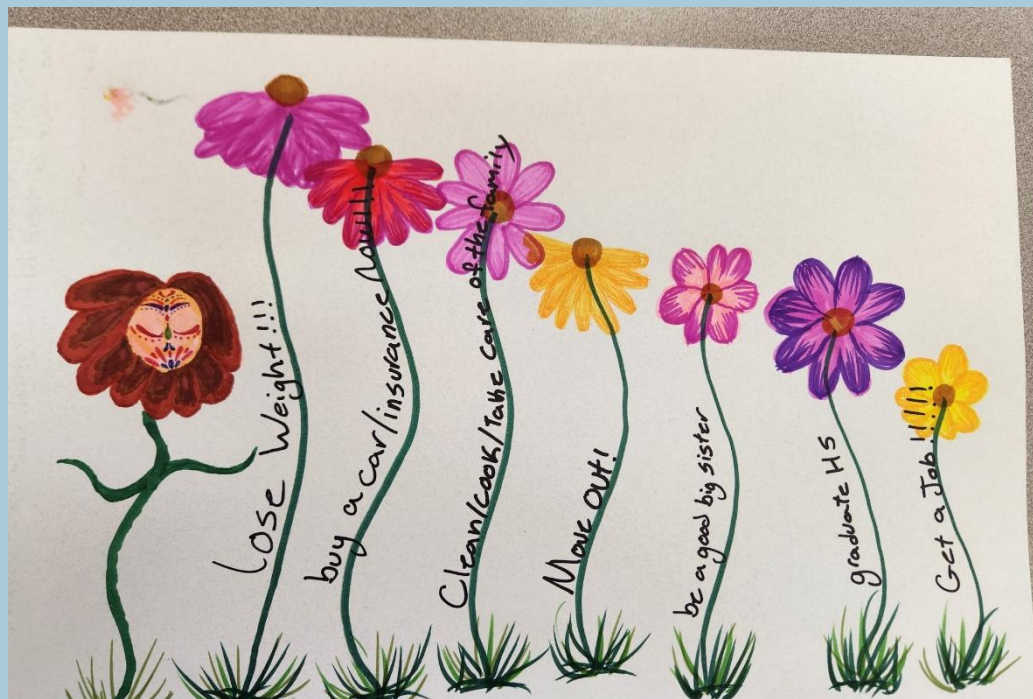
1. Create pathways to address local workforce shortages by building and expanding on addressing the struggles of emerging adulthood.
2. Collaborate with local businesses to increase the number of youth and young adults who complete a pre-employment certification program, increase job shadowing and mentorship, and the number of youth seeking employment in the community.
3. Focus is on students who are not working or in school.

Project partners: OWL360, Believe in Recovery, Jefferson County Juvenile Services, Port Townsend School District, Worksource, Skillmation, Jefferson Healthcare, Chimacum School District

Key successes:

- Built 4 new programs, all continuing
- 190 students served in Tier 1 program
- 35 individuals received support to build employment skills
- 9 active Open Door students (youth re-engagement into high school)
- 4 paid UPLIFT! Internships
- 4 young adult re-engagement into high school+/GED program

YOUTH SUD STIGMA AWARENESS & SYSTEMS CHANGE



Kitsap County | \$50,000

Project aim included:

1. Begin conversation and education in the school system that identifies how adult stigma and bias creates barriers to students receiving help.
2. Address self-stigma and bias within students who use substances and provide targeted education and mental health support.

Project partners: One Heart Wild, Discovery Alternative High School, Explorer School

Key successes:

- Increased on-campus student support with 1 LICSW and 2 clinical interns to conduct assessments, refer to counseling and medical care, provide one-on-one counseling, and provide group counseling



WE ARE STRONGER TOGETHER

Through this funding opportunity, OCH continued to advance the theme of “**Stronger Together: Foster a region of healthy people, thriving communities**” through collaborative action among those working to advance health in the Olympic region.

By funding partner-led projects, OCH serves as a seed planter to spark, support, and spread innovation. OCH extends deep gratitude for our partners who dedicate their time, energy, efforts, and resources to improve the health of our local communities.

Health transformation is bigger than any one organization or tribe, and the impact of OCH is only made possible due to the collaborative efforts of partners. **We are stronger together.**

Get involved!
[Sign up for](#)
[OCH's](#)
[newsletter](#)