



Olympic 
COMMUNITY *of* HEALTH

**Tackling health issues that no single
sector or tribe can tackle alone**

Clallam | Jefferson | Kitsap

March 2021 Natural Community of Care
Collaboration Call

Virtual Norms

- Find a quiet place where you can stay engaged and (mostly) avoid distractions
- Use a webcam if possible; seeing one another builds trust and will help facilitate more meaningful small group discussions
- Speak at a slower pace and be comfortable with silence
- Please mute when not speaking and feel free to utilize the chat box to raise questions or comments
- OCH meetings are open to the public; all insights and opinions are valued
- Care for yourself: stand, stretch, drink water, eat, use the restroom as needed



Healthy people, thriving communities

Vision

A healthier, more equitable three-county region.

Purpose

To tackle health issues that no single sector or tribe can tackle alone.

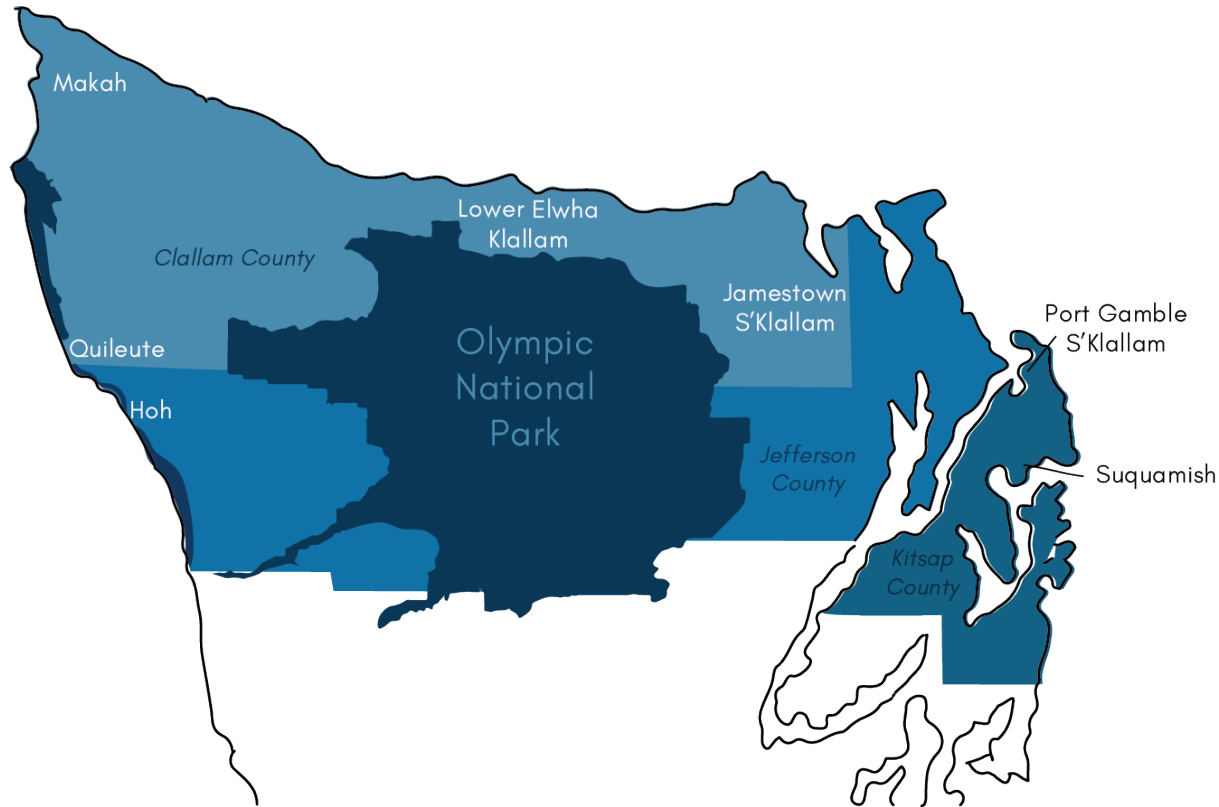
Mission

To solve health problems through collaborative action.

Land Acknowledgement

Olympic Community of Health would like to acknowledge that we are on the territorial lands of the Coast Salish, Klallam, and Chimacum tribes.

The Olympic Region



The Olympic region includes:

Clallam, Jefferson, and Kitsap

We are in the territorial lands of seven Sovereign Nations:

The Hoh, Quileute, Makah, Lower Elwha Klallam, Jamestown S'Klallam, Port Gamble S'Klallam, and Suquamish.

80,163 Medicaid beneficiaries

Contracted OCH partners

- **14** Behavioral health providers
- **11** Primary care providers
- **4** Hospitals
- **7** Community-based organizations and social service providers



Kitsap Successes

- Kitsap Medical Group and Kitsap Children's Clinic each implemented new social determinants of health screening tools for patients and created resource tools to connect patients with appropriate community resources.
- YMCA of Pierce and Kitsap Counties continued to offer evidence-based programs such as the Diabetes Prevention Program and the Blood Pressure Self-Monitoring Program virtually during COVID in-person restrictions to meet the referral opportunities and community need.
- Kitsap Recovery Center continues to expand services that we are offering to the clients at KRC. They added programs for employment assistance, meditation, equine therapy, and a drum circle.
- Raising Resilience hosted several Connection Cafes, a monthly virtual parent support program that connects parents to each other and local resources in new ways.



Regional Successes



OCH received full DSRIP earnings to pass along to partners. **\$11,255,352 paid directly to partners 2018-20**. An additional \$1,255,390 in targeted investments to support partners.

22 submissions in the student poster contest, "Plant Hope, Grow Resilience", encouraging resilience during COVID-19 through art and creativity.

12% increase in preventative and restorative dental services between Jan 2017 and Dec 2019 (all ages).

16,790 participants in chronic disease programs across community-based partners.

78% of Medicaid Managed Care contacts in the Olympic region were in value-based payment arrangements (16% increase from 2019).

Kitsap County COVID-19 Vaccines and Equity

OCH Kitsap Natural Community of Care

Siri Kushner, MPH CPH
Assistant Community Health Director
March 2, 2021



KITSAP PUBLIC HEALTH DISTRICT

Kitsap Resident Case Data

Kitsap COVID-19 Surveillance Report

Please note that all rates, including the map, are delayed by 5 days to ensure data completeness.
The counts (bottom of the page) are not delayed, but include all reported cases.

Dashboard Updated:

February 28, 2021

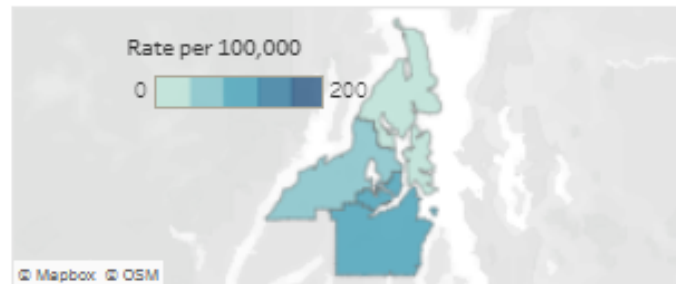
9:30 AM

Kitsap Rate per 100,000 (Past 14 days*)	% Positive (Past 7 Days*)	Vaccine Doses Given by Kitsap Facilities
68.0	3.8%	54,772

Rate of COVID-19 Cases per 100,000, Past 14 days*, Filter by Geographic Region



Rate of COVID-19 Cases per 100,000 Residents by
Geographic Region in Past 14 Days*



Cases, contacts, deaths, and testing information
is current as of 2/27/2021

Total Cases in Isolation**	59
Total Close Contacts in Quarantine***	250
Deaths	82
Total Negative Tests	120,726

	Kitsap	Bainbridge	Bremerton	Central Kitsap	North Kitsap	South Kitsap
Total Positive Cases	5,722	264	1,538	1,345	965	1,610
New Positive Cases Added Since Last Update	16	1	2	3	2	8

<https://kitsappublichealth.org/CommunityHealth/CoronaVirus.php>

Outbreaks: An outbreak is defined as 2 or more cases of COVID-19 with an epidemiological link who do not live together, who became sick within 14 days of each other. When cases are identified in staff or residents of long-term care or congregate living facilities, one case is sufficient to call it an outbreak. One hundred and fifty-one outbreaks were identified prior to January 31st.

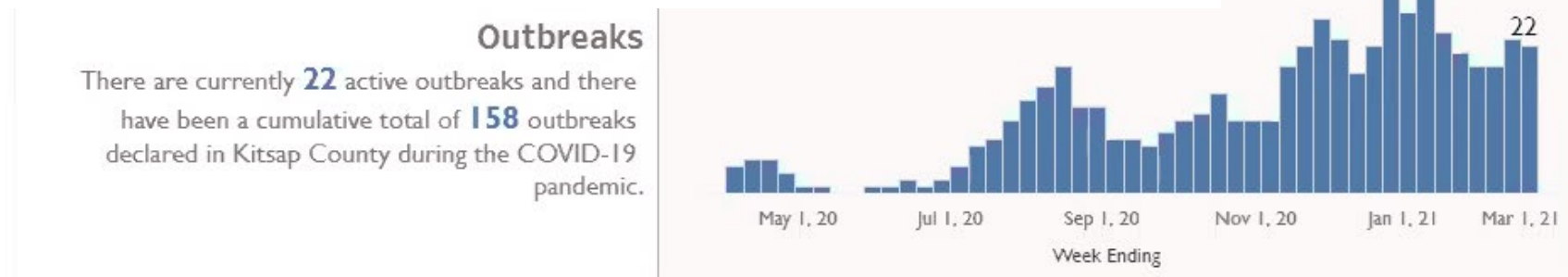


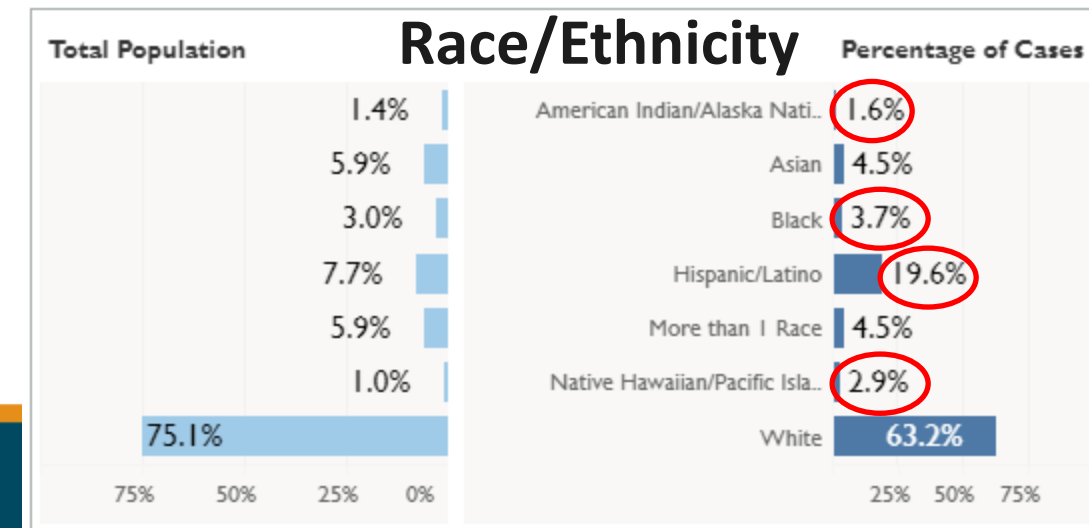
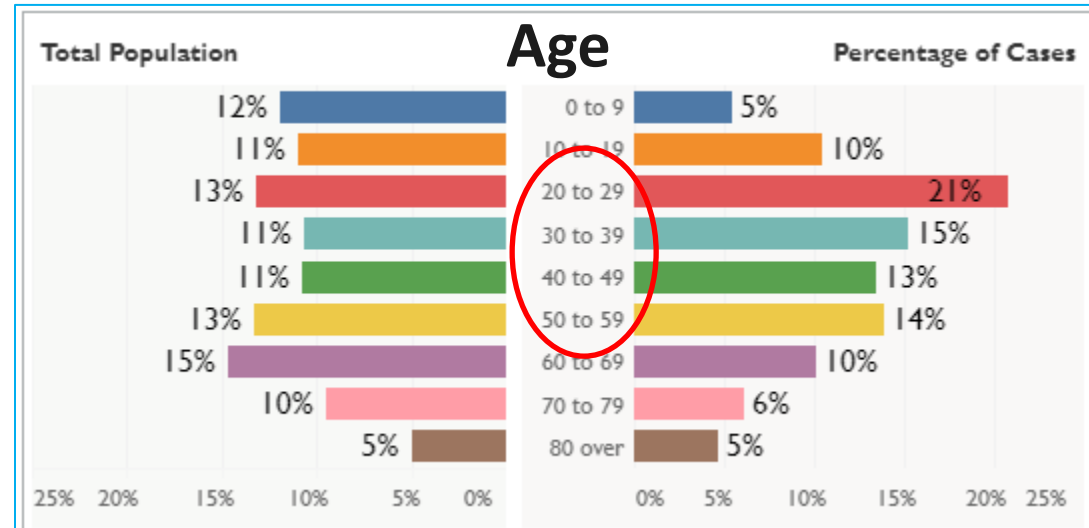
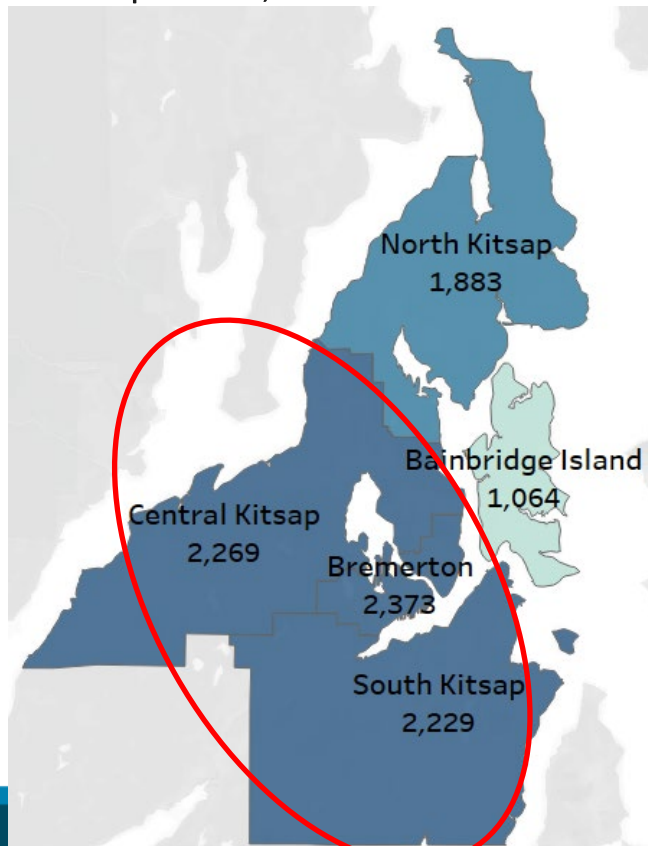
Table 3. Number of Kitsap Outbreaks and Number of Kitsap Cases Associated with the Outbreaks by Type

Type of Outbreak	# Outbreaks	# Kitsap County Cases Associated
Long-term care/senior living	38	449
Government (Military, Corrections, etc.)	34	176
Healthcare	20	129
Non-healthcare congregate living setting	10	35
Retail/Grocery	10	30
Other workplace (Manufacturing, Construction, Personal Care, etc.)	7	30
Hospitality (Restaurants, Lodging)	7	24
School	6	18
Utility Providers and Related	6	16
Group events (travel, meetings, social)	5	40
Place of worship	5	18
Childcare	3	11

Disproportionate Impact of COVID-19: Kitsap Resident Lab-confirmed Cases

Geography

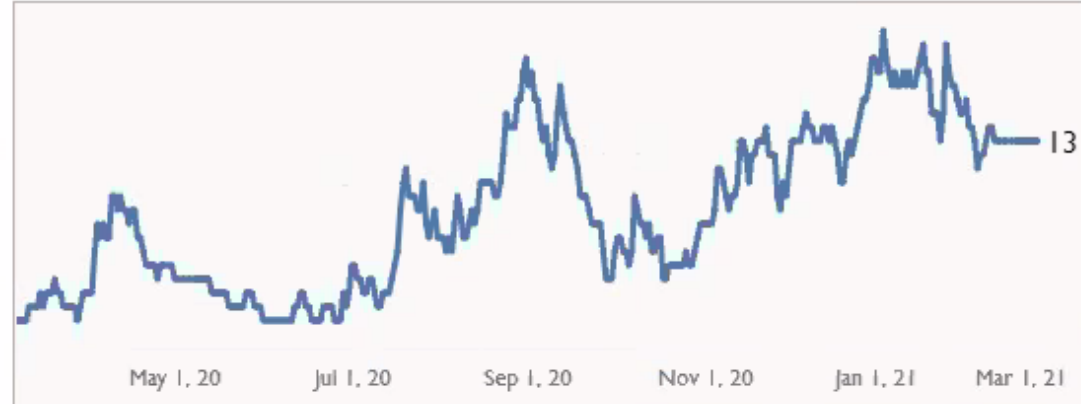
Rate per 100,000 residents



COVID-19 Hospitalizations and Deaths

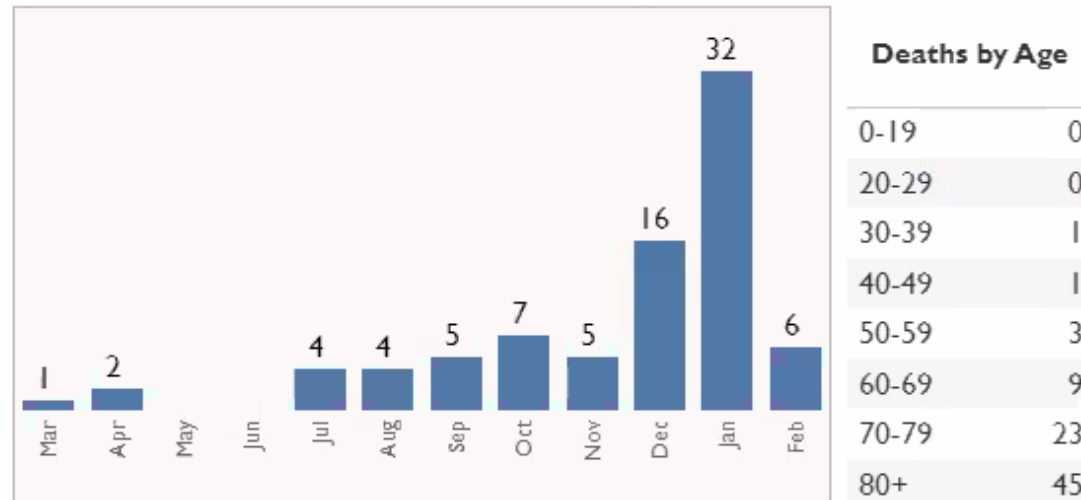
Hospitalizations

There are currently **13** Kitsap residents who are hospitalized for COVID-19. There have been **241** total hospitalizations since March.



Deaths

Of the deaths reported so far, there have been **33** deaths related to COVID-19 in the month of January and **5** in the month of February. There have been a total of **82** deaths related to COVID in Kitsap County residents since March 2020.



- Both hospital and death rates are highest among residents of Bremerton; older adults; Native Hawaiian/Other Pacific Islanders and American Indian/Alaska Natives
- Hispanics have high hospitalization rates

Health Equity and COVID-19

Health equity is when everyone has the opportunity to be as healthy as possible.

Long-standing systemic health and social inequities have put many groups at increased risk of getting sick and dying from COVID-19.

Kitsap Vaccine Equity Collaborative

- How does Kitsap County address inequities and work to ensure equitable access to COVID-19 vaccine?
- Convene a collaborative of community organizations, residents, and healthcare providers that have an understanding of communities disproportionately impacted by the COVID-19 pandemic to help inform and improve equity in local vaccination efforts.



Guiding Principles

Create an inclusive process

- Include people disproportionately impacted by COVID-19 and the trusted community-based organizations and providers that serve these communities continuously and meaningfully in COVID vaccine planning, implementation and evaluation processes.

Identify and mitigate barriers that deter access

- Partner with communities to identify barriers (such as distrust based on historical and continued racism and exclusion, past practices, language access, transportation) and identify assets to guide outreach, education and vaccine delivery.

Mitigate health inequities

- Promote a respectful and culturally responsive approach to vaccine delivery that explicitly addresses the higher burden of COVID-19 experienced by the populations affected most heavily, given their exposure and compounding health inequities. Publicly share data to measure our progress.



Collaborative Structure

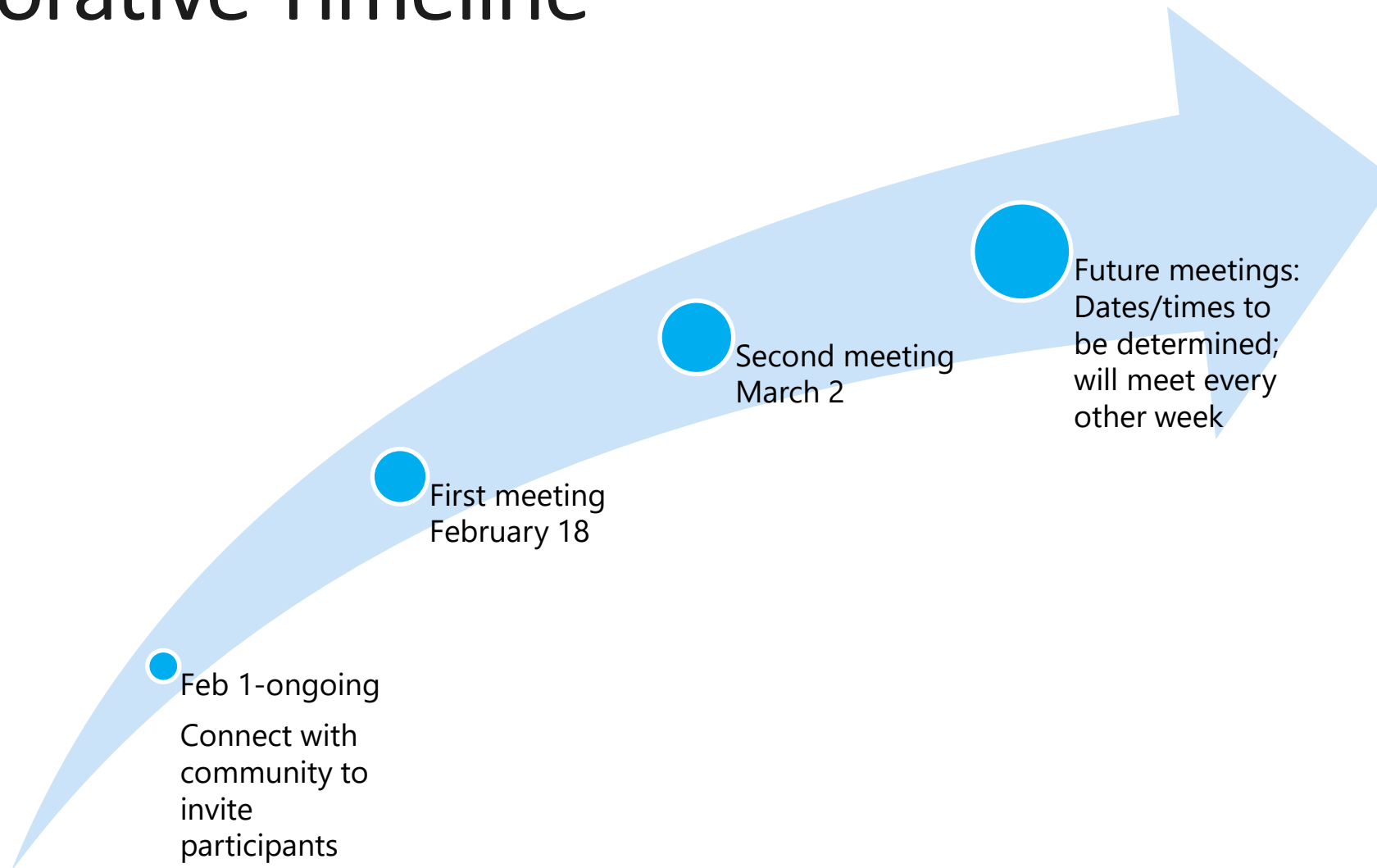
- Meetings are one hour, via Zoom
- Chaired by a community participant
- Staffed by KPHD's COVID-19 Program Community Liaison
- KPHD has contracted with Kitsap Strong to help launch the collaborative providing guidance, support and linkages

Role of Members:

- Inform KPHD and each other on opportunities, successes, and barriers to current vaccine efforts
- Help develop and share accurate information and messages about recommended steps to reduce the spread of COVID-19 within communities/organizations



Collaborative Timeline



What is our goal?

To ensure vaccine distribution is being prioritized in communities most impacted by COVID-19.



People at higher risk of exposure at work



People at higher risk for severe illness due to age.



People more impacted due to access barriers.



People at risk due to their living situation



People more impacted due to systemic inequities and racism.



Vaccinations (data as of 2/24)

Statewide

Vaccine Doses Given
and Reported (statewide
or selected counties) **1,500,485**

Statewide Measures Only

Vaccine Doses Given
and Reported in
Washington **1,500,485**

Doses Delivered to
Washington Providers **1,699,050**

Doses Delivered for
CDC long-term care
vaccination program **177,840**

Percentage of
Delivered Doses
Given **79.95%**

Statewide

Percent of People
Initiating Vaccination **13.35%**

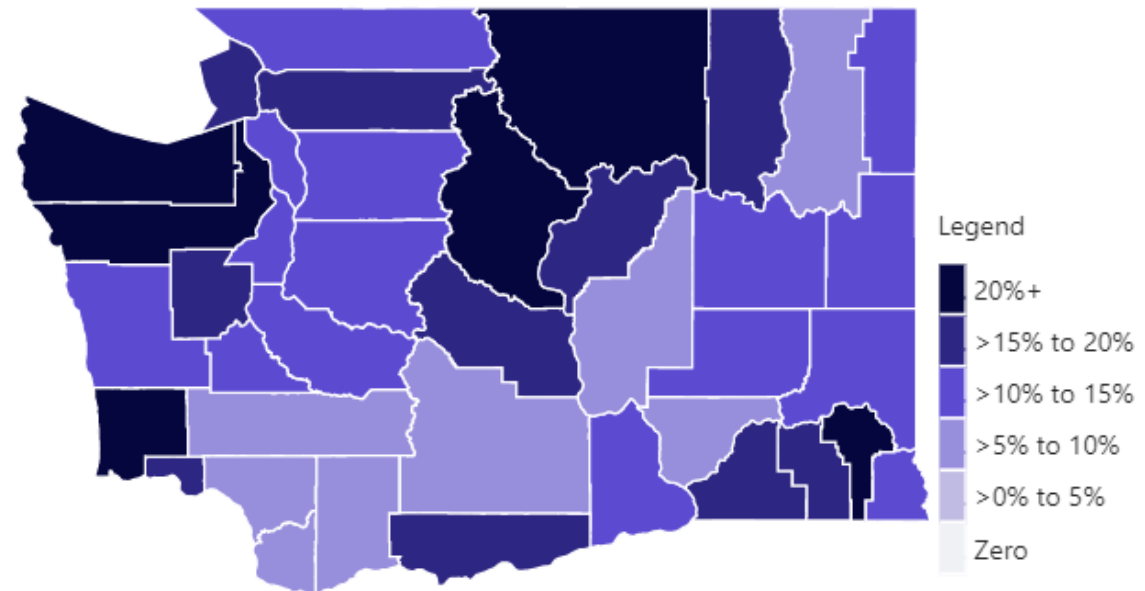
Percent of People Fully
Vaccinated **6.46%**

Kitsap County

Percent of People
Initiating Vaccination **14.96%**

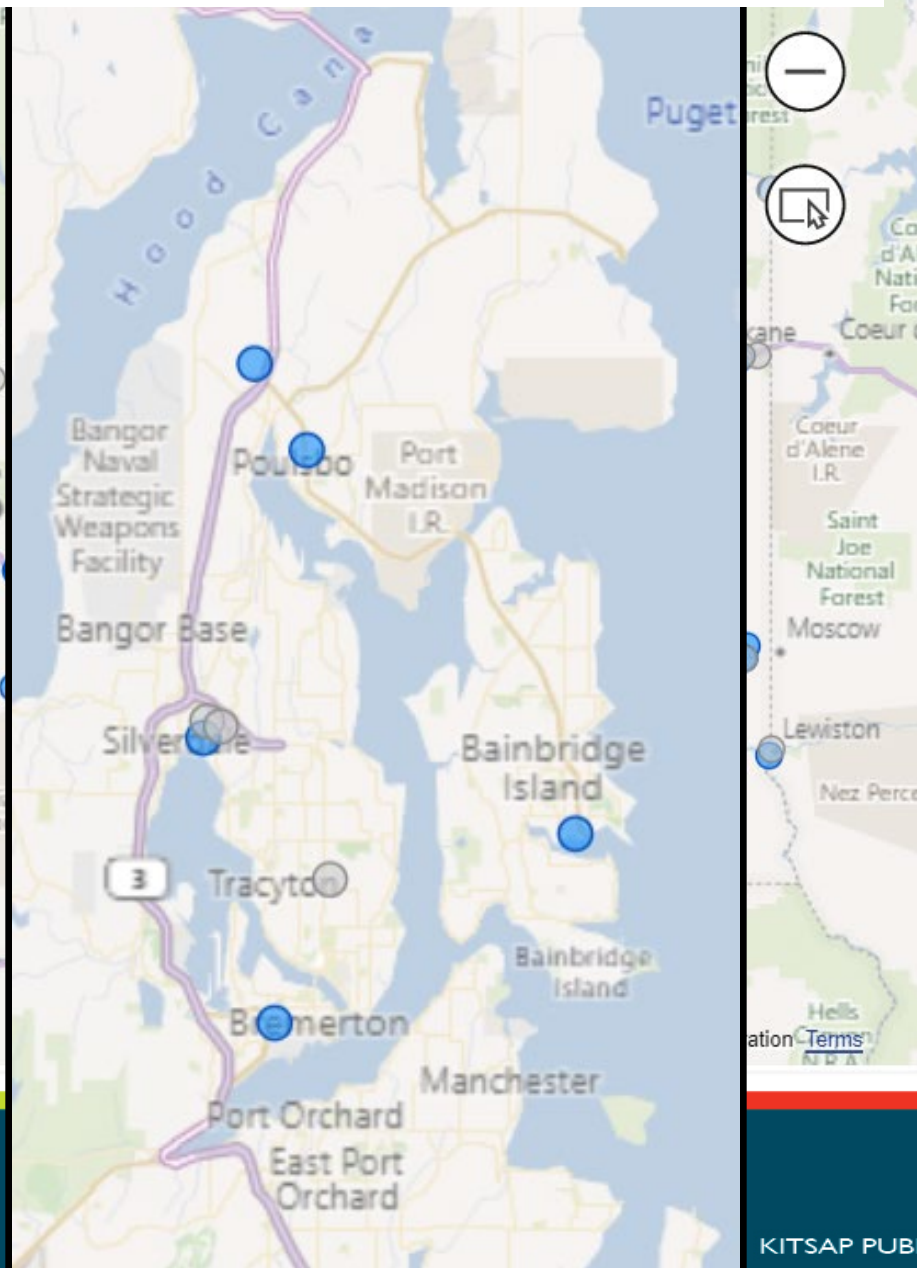
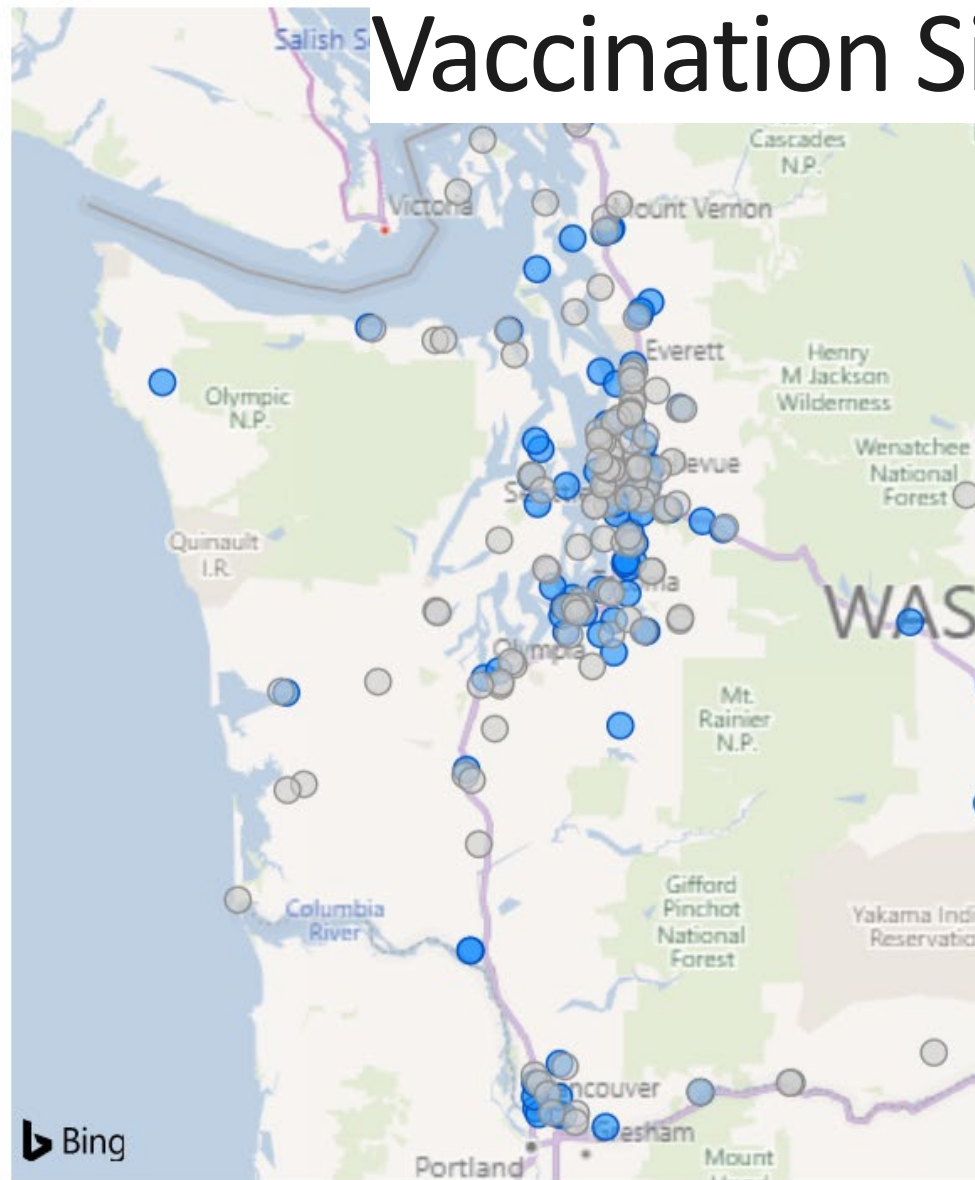
Percent of People Fully
Vaccinated **7.04%**

PEOPLE INITIATING VACCINATION (1ST DOSE RECEIVED)



Appointment ● Available ● Not available

Vaccination Sites – DOH website

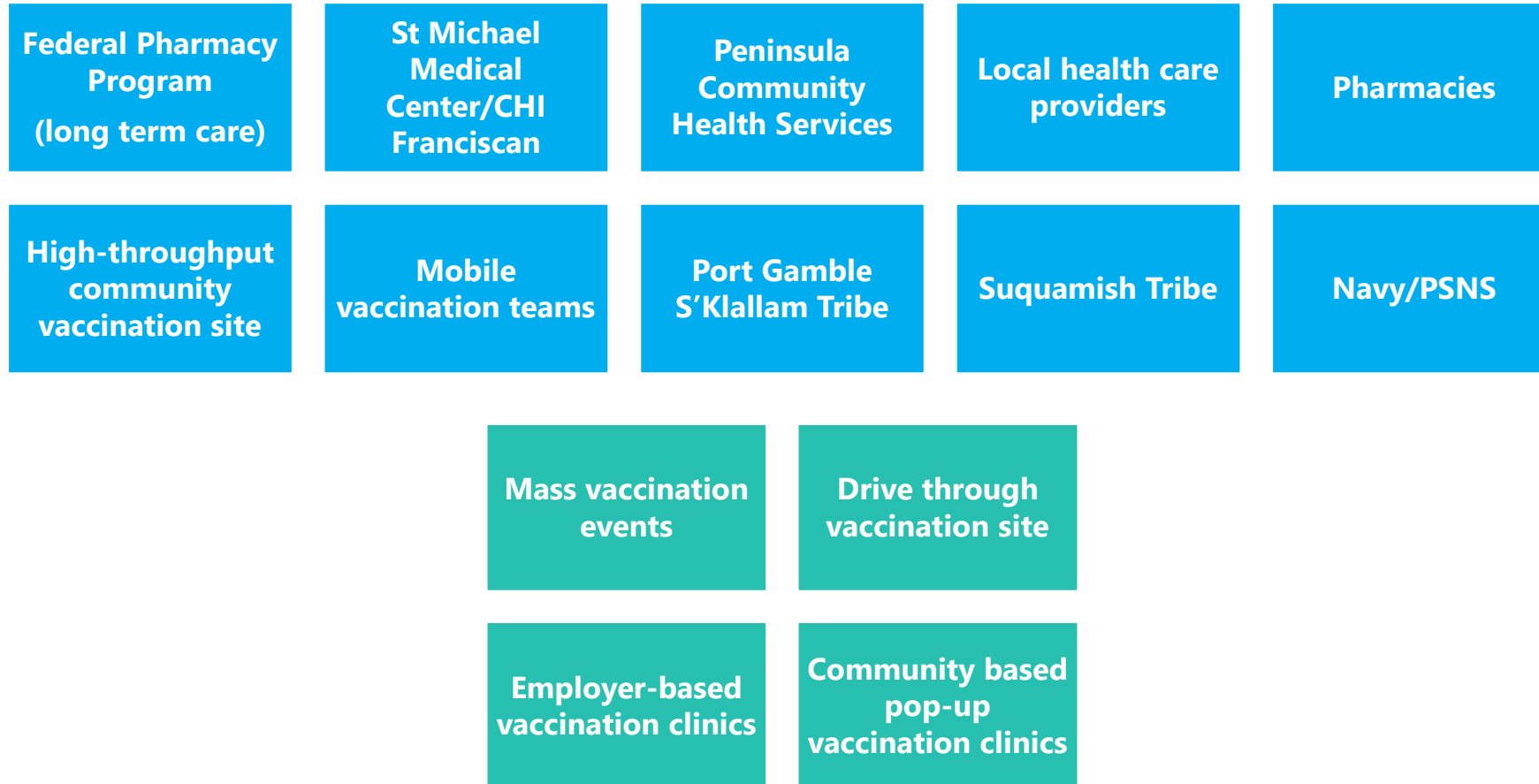


<https://www.doh.wa.gov/YouandYourFamily/Immunization/VaccineLocations>



KITSAP PUBLIC HEALTH DISTRICT

Kitsap Multi-Pronged Approach for Vaccine Delivery: Current and future



Across All Vaccine Delivery Models, Strive to:

- Focus on highest risk and most impacted
- Work with community for input on planning and communication
- Make registration easy
- Provide diversity in appointment days/hours
- Address transportation and mobility barriers
- Ensure language access

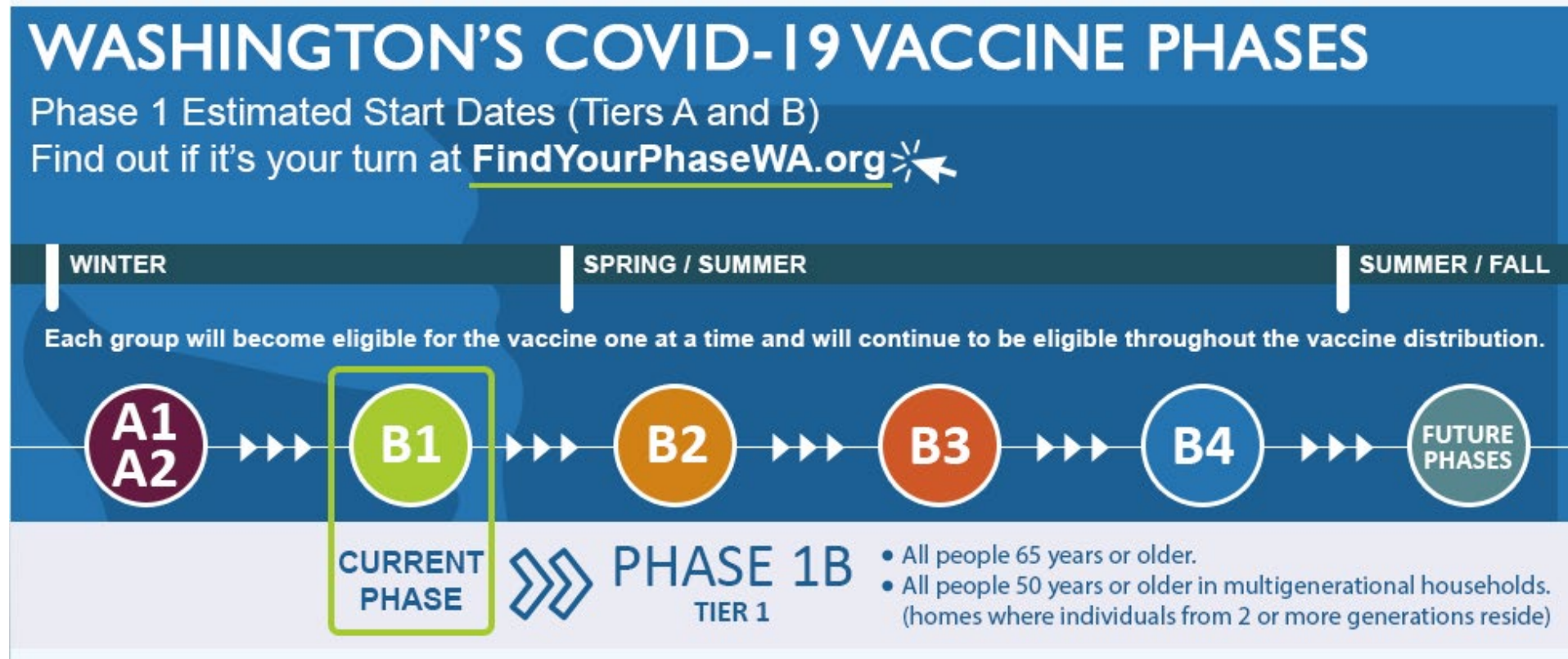


Principles in Action: What we're doing

- Providing **phone numbers in English and Spanish** for individuals to call for registration if they lack internet access or need help registering
- **Requesting names of eligible individuals needing vaccination from community partner organizations** working with populations disproportionately impacted by COVID-19
- **Setting aside a portion of allocated doses for people with higher barriers** to accessing vaccine – use the lists of people calling KPHD vaccine line and names given to us from partners
- Offering **interpretation service** by phone onsite at vaccine clinic
- Ensuring design of high-throughput site is **easy to navigate and comfortable for people of all abilities**
- Providing **timely analysis and publication of vaccine distribution data** to identify and monitor inequities in distribution
- **Convening Vaccine Equity Collaborative** to help inform and improve equity in local vaccination efforts



Vaccine Phases Timeline



Current eligibility for vaccine:

A1, A2: At risk health care workers, high-risk first responders, long-term care residents

B1: Adults age 65+, adults 50+ in multigenerational households

Data Limitations

- High percentages of unknown race and ethnicity and language
- Data include only those reported to the Washington Immunization Information System
 - May not include all vaccines given by Tribes
 - Does not include vaccines given by Navy
- WA DOH sends updated file with previous weeks' data every Monday to KPHD



KPHD COVID-19 Vaccine Web Page

- https://kitsappublichealth.org/CommunityHealth/CoronaVirus_Vaccine.php
- Vaccine Collaborative materials will be posted in the “Resources for Community Partners” section
- Weekly vaccine distribution data are displayed at the bottom of the page

KITSAP PUBLIC HEALTH DISTRICT

HOME ABOUT CONTACT NEWS/MEDIA CAREERS

COMMUNITY HEALTH ENVIRONMENTAL HEALTH FOOD SAFETY INFORMATION

Welcome to Kitsap Public Health District

COVID-19 VACCINE

VER PÁGINA EN ESPAÑOL ← RETURN TO MAIN COVID-19 PAGE

Some clinics and pharmacies are now offering COVID-19 vaccine. However, the supply of vaccine is very limited and demand for vaccination is extremely high. Thank you for being patient as supplies increase and more appointments become available. Everyone who is eligible will be able to get vaccinated, but it will take time.

WHO CAN GET VACCINATED?

These groups are currently eligible for vaccination in Washington:

PHASE 1A

- Healthcare workers and first responders in high-risk settings.
- Long-term care staff and residents.

PHASE 1B, TIER1

- Everyone age 65 or older.
- People 50 or older in multigenerational households (such as people caring for elders in their home).

CHECK YOUR ELIGIBILITY **FIND A VACCINE LOCATION** **SIGN UP FOR LOCAL UPDATES**

REGISTER FOR OUR COVID-19 VACCINE CLINIC

NO APPOINTMENTS CURRENTLY AVAILABLE. PLEASE SIGN UP FOR UPDATES.

- Getting Help By Phone
- COVID-19 Vaccination Updates
- Resources for Community Partners
- Resources for Healthcare Providers

Kitsap County Vaccine Distribution

Weekly Updates - Monday
Last Updated: 2/22/2021

Initial supplies of COVID-19 vaccine have been delivered in Kitsap County. Providers will administer vaccine to their own staff and others in the community based on priority groups created at the national and state level. Kitsap Public Health District (KPHD) is supporting health care providers with the vaccine rollout. Detailed guidance is available at <https://www.doh.wa.gov/Emergencies/COVID19/Vaccine>

Data is from the WA DOH COVID-19 Data Dashboard at <https://www.doh.wa.gov/Emergencies/COVID19/DataDashboard>
WA DOH COVID-19 Data Dashboard data as of 2/17/2021.

Kitsap County Residents Vaccinated			Vaccine Doses Given by Kitsap Facilities	
Kitsap County residents who have received at least 1 dose	37,457	13.8%	Vaccine Doses Given by Kitsap Facilities	45,662
Kitsap County residents who are fully vaccinated with 2 doses	12,921	4.7%	Vaccine Doses Allocated by WA State*	37,255

Number of Vaccine Doses Given at Kitsap Facilities by Date

Kitsap County Goal: 1,620 Doses Per Day

Kitsap County Vaccine Distribution

Weekly Updates - Monday

Last Updated: 3/1/2021

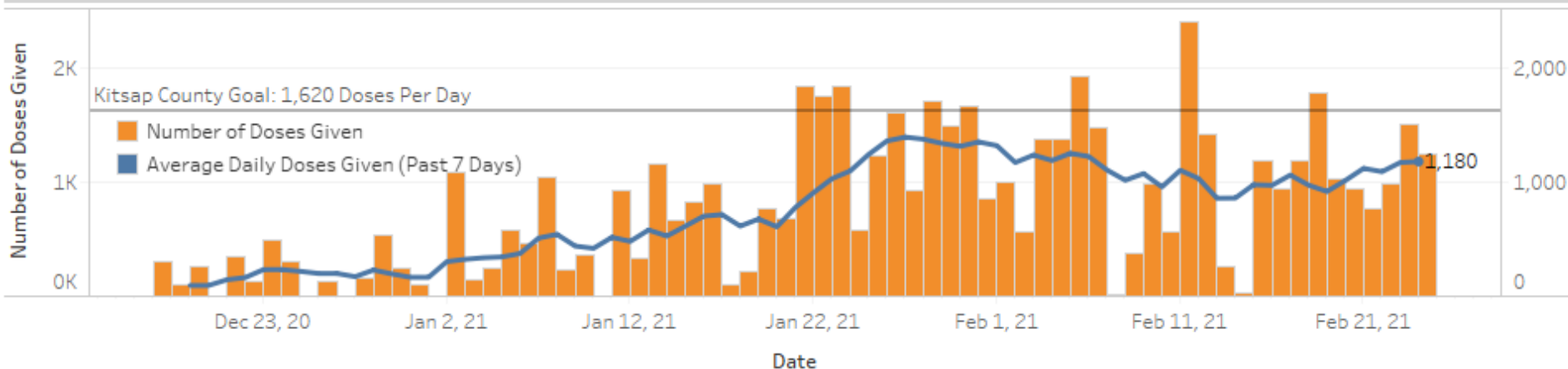


Initial supplies of COVID-19 vaccine have been delivered in Kitsap County. Providers will administer vaccine to their own staff and others in the community based on priority groups created at the national and state level. Kitsap Public Health District (KPHD) is supporting health care providers with the vaccine rollout. Detailed guidance is available at <https://www.doh.wa.gov/Emergencies/COVID19/Vaccine>

Data is from the **WA DOH COVID-19 Data Dashboard** at <https://www.doh.wa.gov/Emergencies/COVID19/DataDashboard>
WA DOH COVID-19 Data Dashboard data as of 2/24/2021

Kitsap County Residents Vaccinated			Vaccine Doses Given by Kitsap Facilities	
Kitsap County residents who have received at least 1 dose	40,410	14.8%	Vaccine Doses Given by Kitsap Facilities	54,772
Kitsap County residents who are fully vaccinated with 2 doses	19,025	7.0%	Vaccine Doses Allocated by WA State*	53,755

Number of Vaccine Doses Given at Kitsap Facilities by Date



KITSAP PUBLIC HEALTH DISTRICT

KPHD COVID-19 Vaccine Distribution Demographics Data

- Our first report that includes data for those vaccinated as of Feb 7th by age, gender, race/ethnicity, and language



KPHD COVID-19 Data Dashboards

- Vaccine distribution dashboard -- also viewable on the main vaccine web page
- **NEW THIS WEEK!** vaccine distribution demographics dashboard

KITSAP PUBLIC HEALTH DISTRICT

HOME ABOUT CONTACT NEWS/MEDIA CAREERS

COMMUNITY HEALTH ENVIRONMENTAL HEALTH FOOD SAFETY INFORMATION

Welcome to Kitsap Public Health District

COVID-19 DATA

[← RETURN TO MAIN COVID-19 PAGE](#)

COVID-19 Data Dashboards

KPHD Daily Surveillance Report Daily update of case, contacts, deaths, vaccines given, and more. Updated 2 p.m. weekdays; mid-morning on weekends View Dashboard	Kitsap County COVID-19 Overview Cases, testing, hospitalizations, deaths. Updated Thursdays View Dashboard	Testing and Case Investigation Testing volumes and testing facilities, active cases and contacts, investigation timelines. Updated Thursdays View Dashboard
Case Demographics Cases by age, race/ethnicity, and language. Updated Thursdays View Dashboard	Healthcare System COVID-19 hospitalizations, ICU occupancy, ventilators in use. Updated Thursdays View Dashboard	School Metrics Metrics referenced in state guidance for schools. Updated Thursdays View Dashboard
COVID-19 Vaccination Kitsap residents vaccinated, vaccines given by Kitsap facilities, vaccine allocations, and more. Updated Mondays View Dashboard	COVID-19 Vaccination Demographics Kitsap County residents vaccinated by age, sex, geographic area, and race/ethnicity. Updated Mondays View Dashboard	

NEW to the KPHD website...

- Weekly updates by demographic group

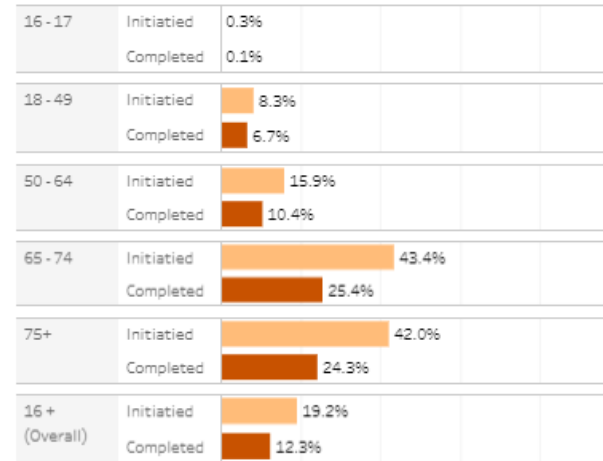
Kitsap County Vaccine Distribution Demographics

Weekly Updates - Monday
Last Updated: 3/1/2021

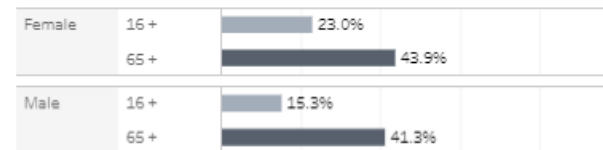


Healthcare providers in our county have been administering COVID-19 vaccines since late December. Kitsap Public Health District is working with the state to better understand who in our county is getting vaccinated through the state's immunization data. The data reveals how local vaccination rates vary by age, race, ethnicity, language, and geographic area. Similar disparities are being seen across the state and country. Kitsap Public Health is currently collaborating with service organizations and healthcare providers to support equitable access to vaccine for eligible county residents and reach populations hardest hit by the COVID-19 pandemic.

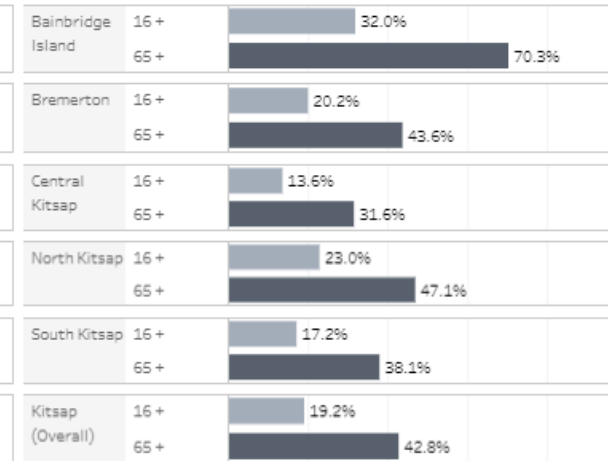
Percent of Kitsap Residents Vaccinated by Age and Stage of Vaccination:



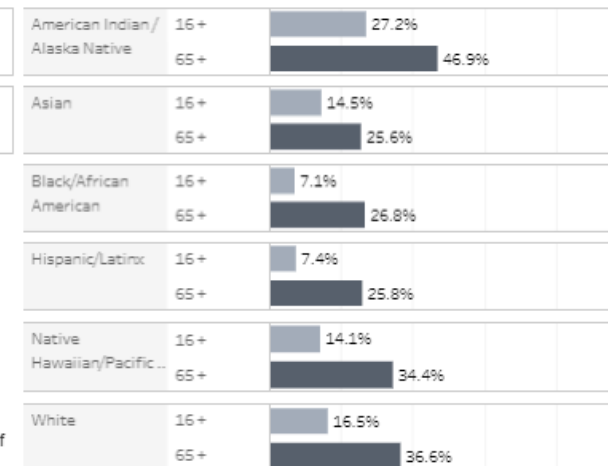
Percent of Kitsap Residents who have Initiated Vaccination by Sex and Age:



Percent of Kitsap Residents who have Initiated Vaccination by Geographic Region and Age:



Percent of Kitsap Residents who have Initiated Vaccination by Race/Ethnicity and Age:



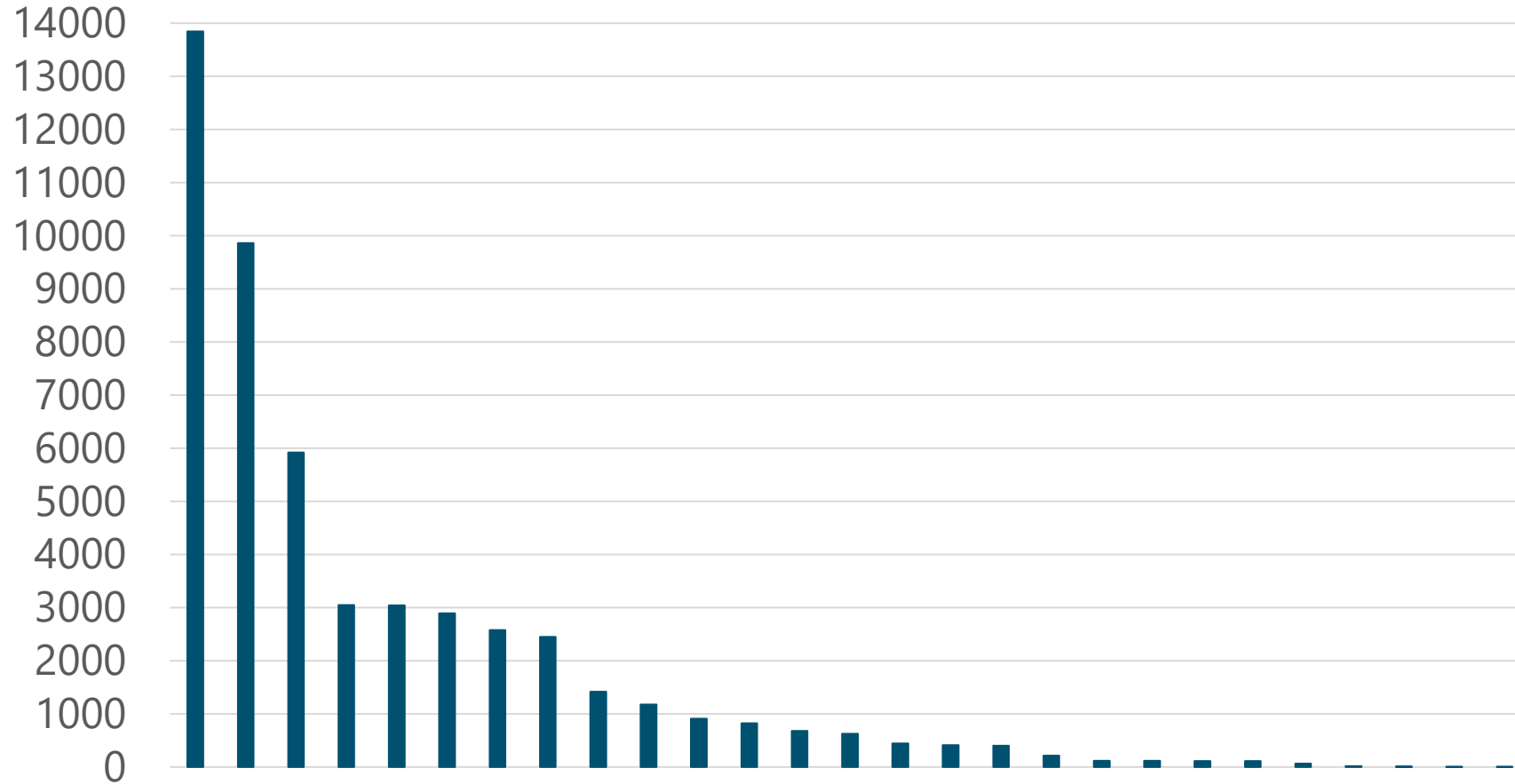
Missing Data: <1% of sex data, 12% of race/ethnicity data
Sources: (1) Vaccination data reported to Washington State Immunization Information System (VIA IIS) as of 2/28/2021, (2) Washington State Office of Financial Management, Population Estimates, 2020

What we know about vaccine distribution to date...



KITSAP PUBLIC HEALTH DISTRICT

Kitsap vaccine providers by doses administered (as of 2/22/21, 51,254 doses)



Kitsap Residents by Age and Gender

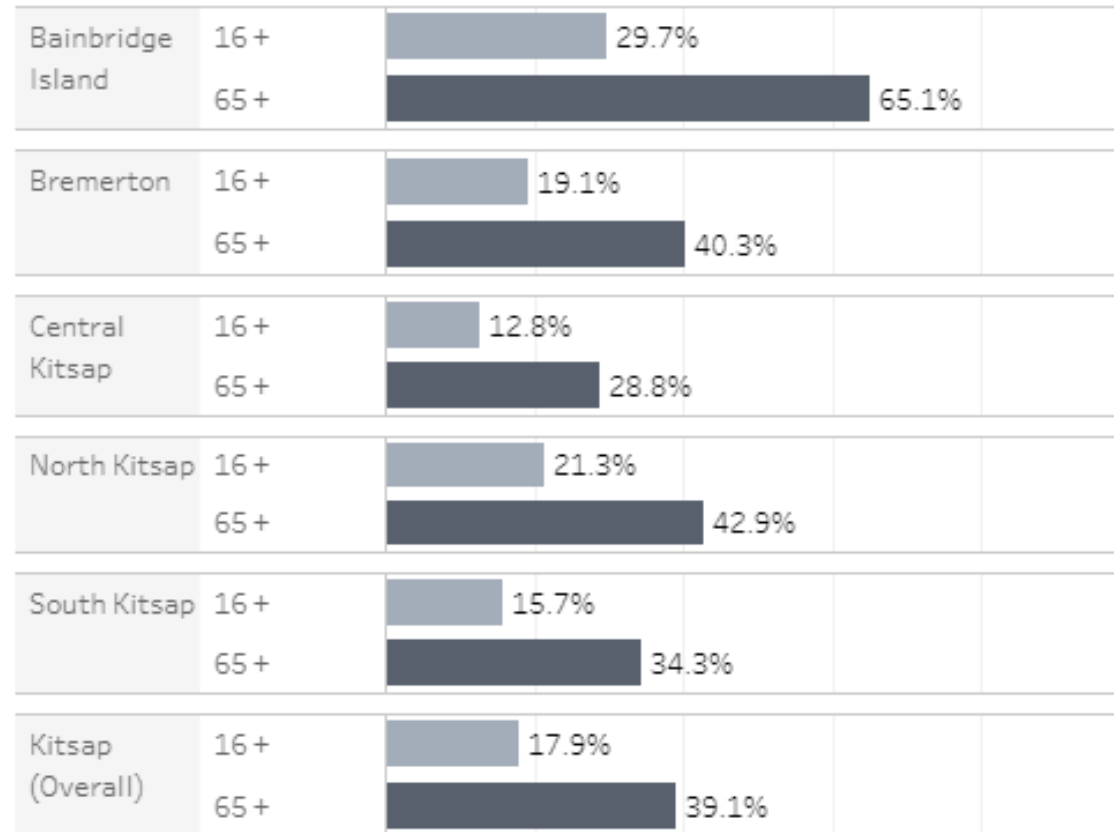
(as of 2/21/2021)

- Approaching half of older adults (age 65+) have had at least one dose
 - Nearly 4 in 10 have had dose 1; about 1 in 10 have had dose 2
- Slightly more females age 65+ have had at least one dose (40%) compared to males (38%)



Kitsap Residents by Geography (as of 2/21/2021)

Percent of Kitsap Residents who have Initiated Vaccination by Geographic Region and Age:



- Among older adults (age 65+), there is a vast difference in vaccination rates across our county, from 29% to 65%



Kitsap Residents by Race/Ethnicity (as of 2/21/2021)

- Among older adults (age 65+), there are differences in vaccination rates across race/ethnicity groups in our county, ranging from 23% to 45%

Percent of Kitsap Residents who have Initiated Vaccination by Race/Ethnicity and Age:

American Indian / Alaska Native	16 +	26.2%		
	65 +	44.7%		
Asian	16 +	13.6%		
	65 +	22.8%		
Black/African American	16 +	6.2%		
	65 +	22.6%		
Hispanic/Latinx	16 +	7.0%		
	65 +	23.4%		
Multi Race	16 +	0.1%		
	65 +	0.2%		
Native Hawaiian/Pacific...	16 +	13.2%		
	65 +	31.1%		
White	16 +	15.2%		
	65 +	33.3%		



Challenges

- Barriers to access
 - misinformation, distrust, internet access, transportation, language, etc.
- Limited vaccine supply
 - inconsistent allocations, weather delays
- 3 different vaccines
- Data entry burden and timely access to data
- Communications, information-sharing, coordination
- Vaccine administration complexities
 - ancillary supplies, PPE, adverse reaction monitoring, cost
- Competing priorities
 - routine healthcare, testing, vaccines, etc.



Opportunities

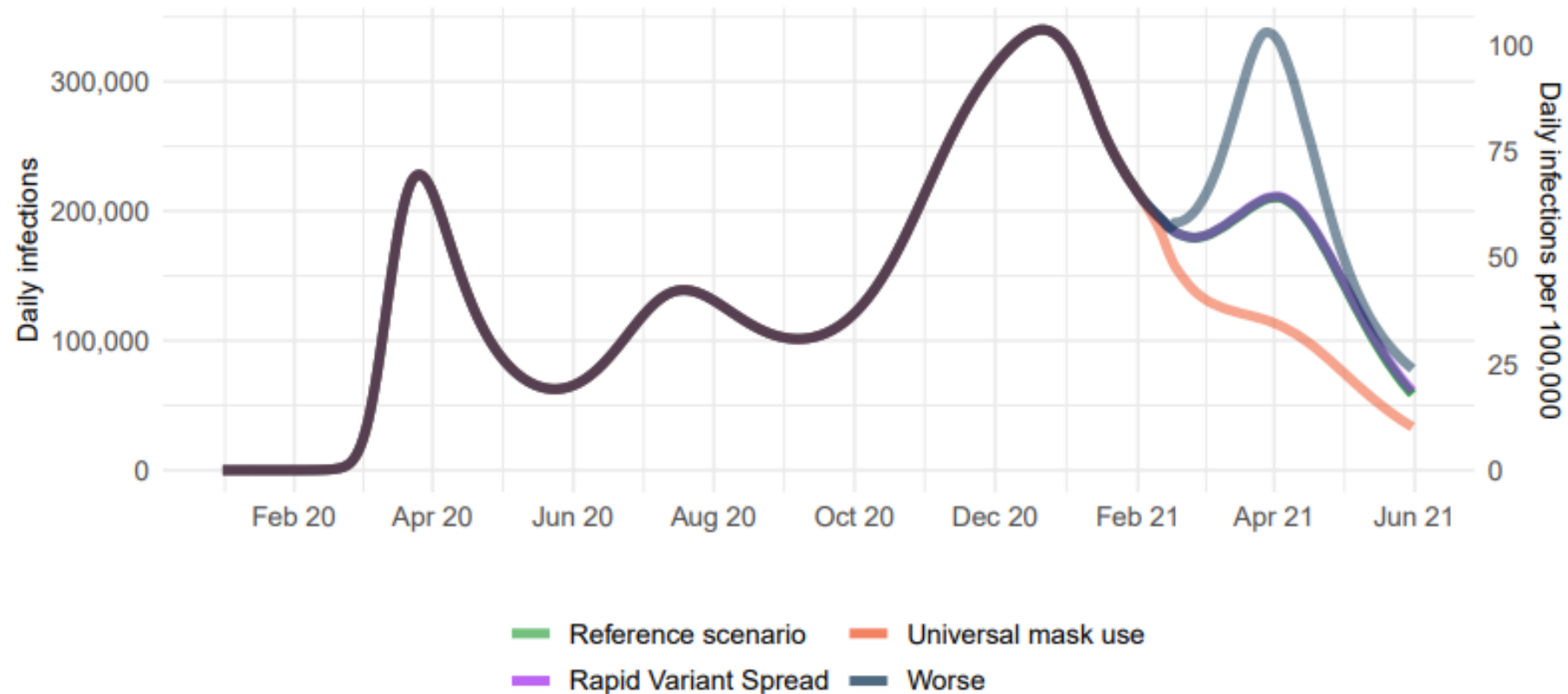


- Strong partnerships
- Committed individuals and organizations
- Innovations



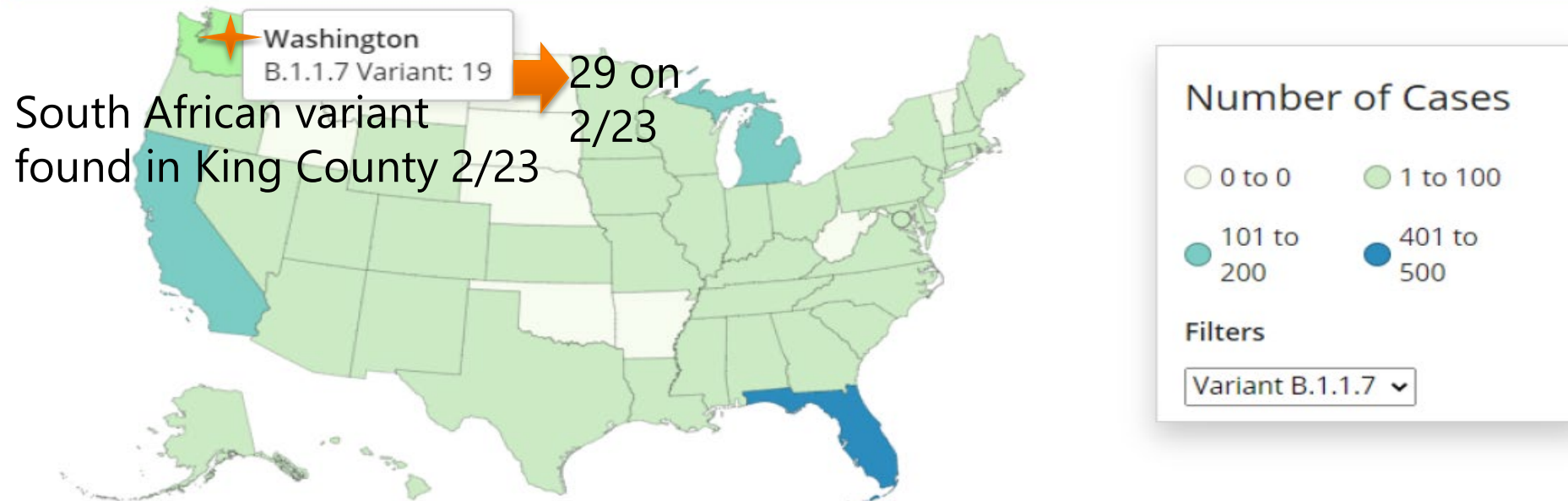
Where are we headed?

Figure 15. Daily COVID-19 infections until June 01, 2021 for four scenarios



Variant	Reported Cases in US	Number of States Reporting
B.1.1.7	1523	42
B.1.351	21	10
P.1	5	4

Emerging Variant Cases in the United States*†



Territories AS GU MH FM MP PW PR VI



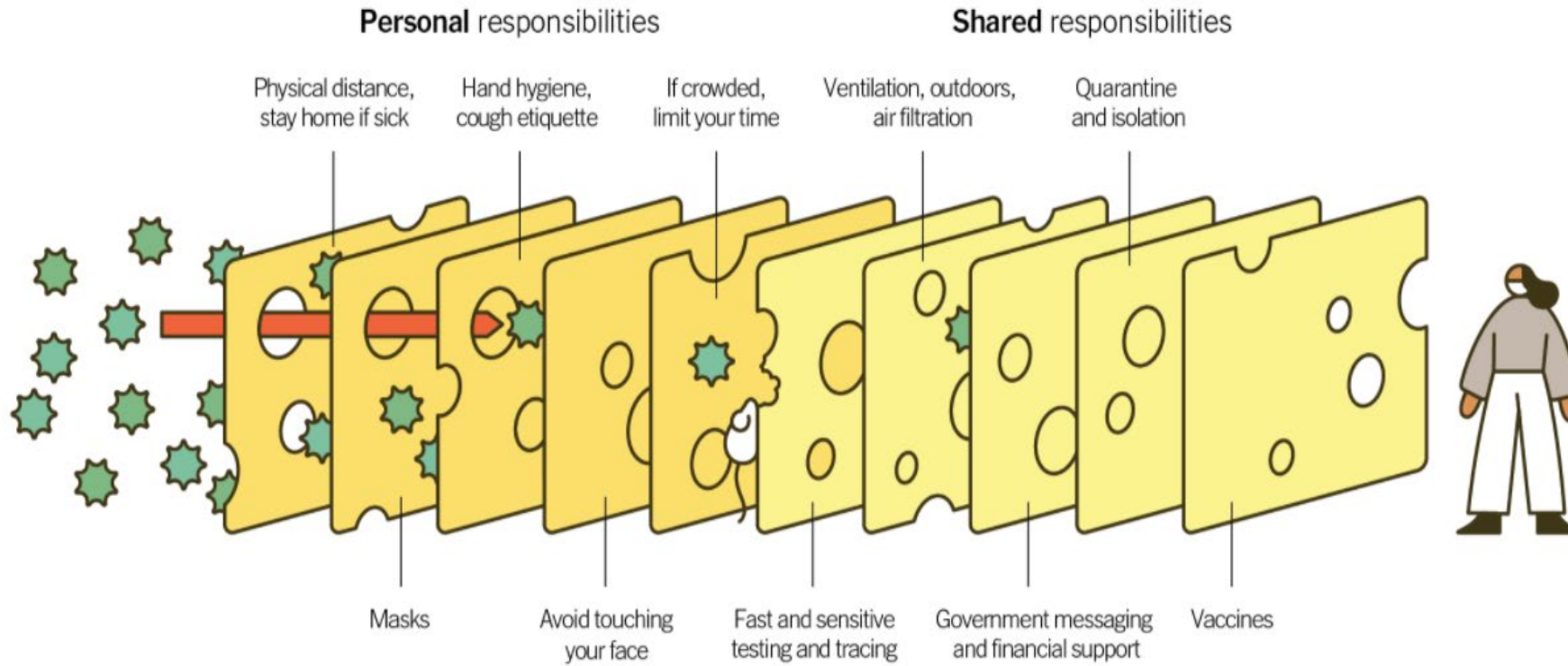
<https://www.cdc.gov/coronavirus/2019-ncov/transmission/variant-cases.html>



KITSAP PUBLIC HEALTH DISTRICT

Multiple Layers Improve Success

The Swiss Cheese Respiratory Pandemic Defense recognizes that no single intervention is perfect at preventing the spread of the coronavirus. Each intervention (layer) has holes.



Source: Adapted from Ian M. Mackay (virologydownunder.com) and James T. Reason. Illustration by Rose Wong

NA



KITSAP PUBLIC HEALTH DISTRICT

How Can You Help?

- Stay informed
- Share accurate information – help spread linguistically appropriate resources within your community
- Advocate for local funding and ways to address challenges
- Encourage local healthcare providers to enroll as vaccine providers
- Encourage individuals who can, to sign up as local emergency volunteers
- Interested in the Kitsap Vaccine Equity Collaborative? Contact Holly.Bolstad@kitsappublichealth.org or 360-233-6247



Stay Informed

- Sign up for KPHD's COVID-19 vaccine listserv and COVID-19 updates
- Sign up for Kitsap County's COVID-19 updates
- Find information on:
 - [KPHD's COVID-19 vaccine webpage](#)
 - [DOH's COVID-19 vaccine webpage](#)
 - [CDC's COVID-19 vaccine webpage](#)

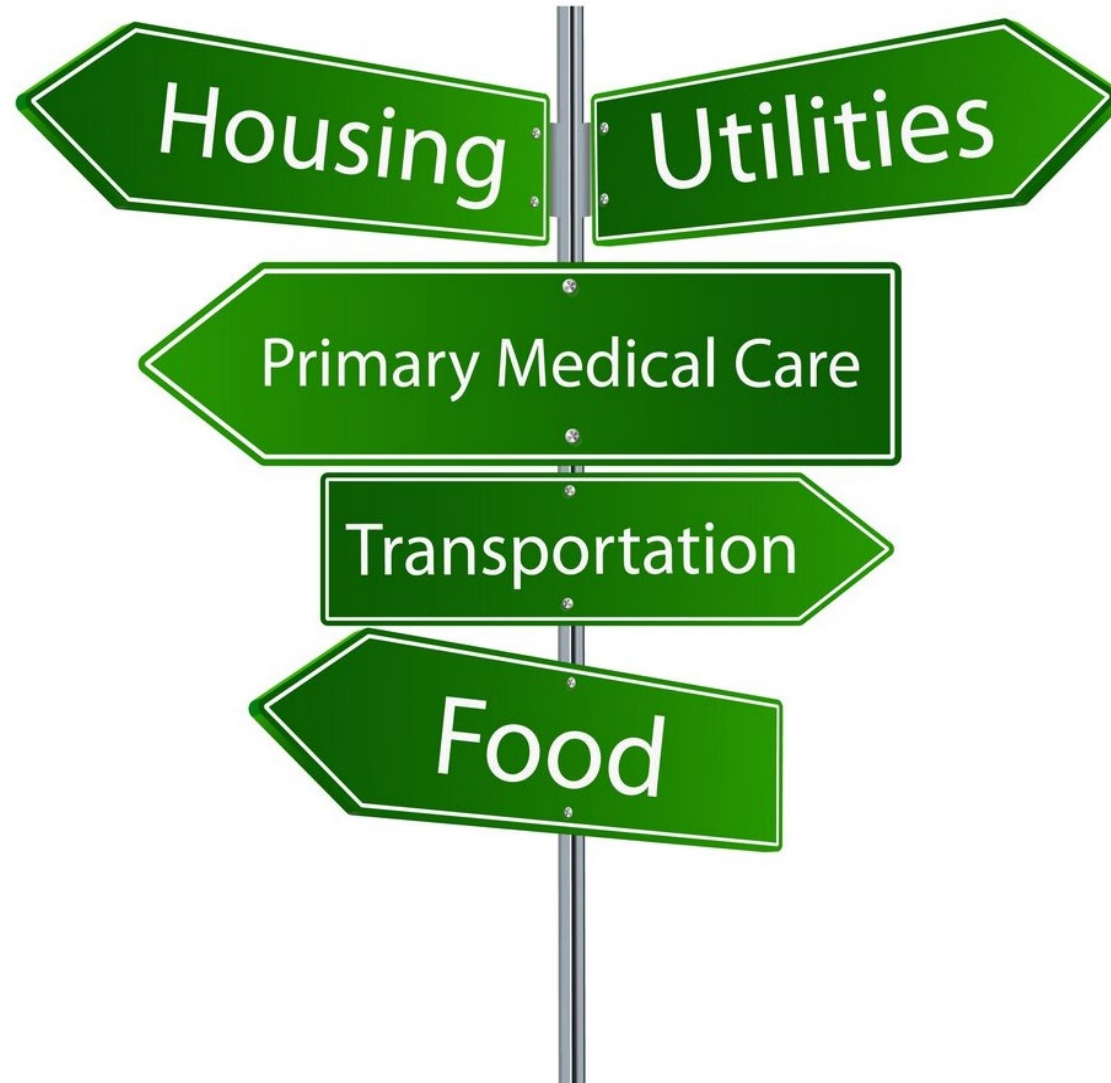




Community-Clinical Linkages

Community Clinical Linkages (CCLs)

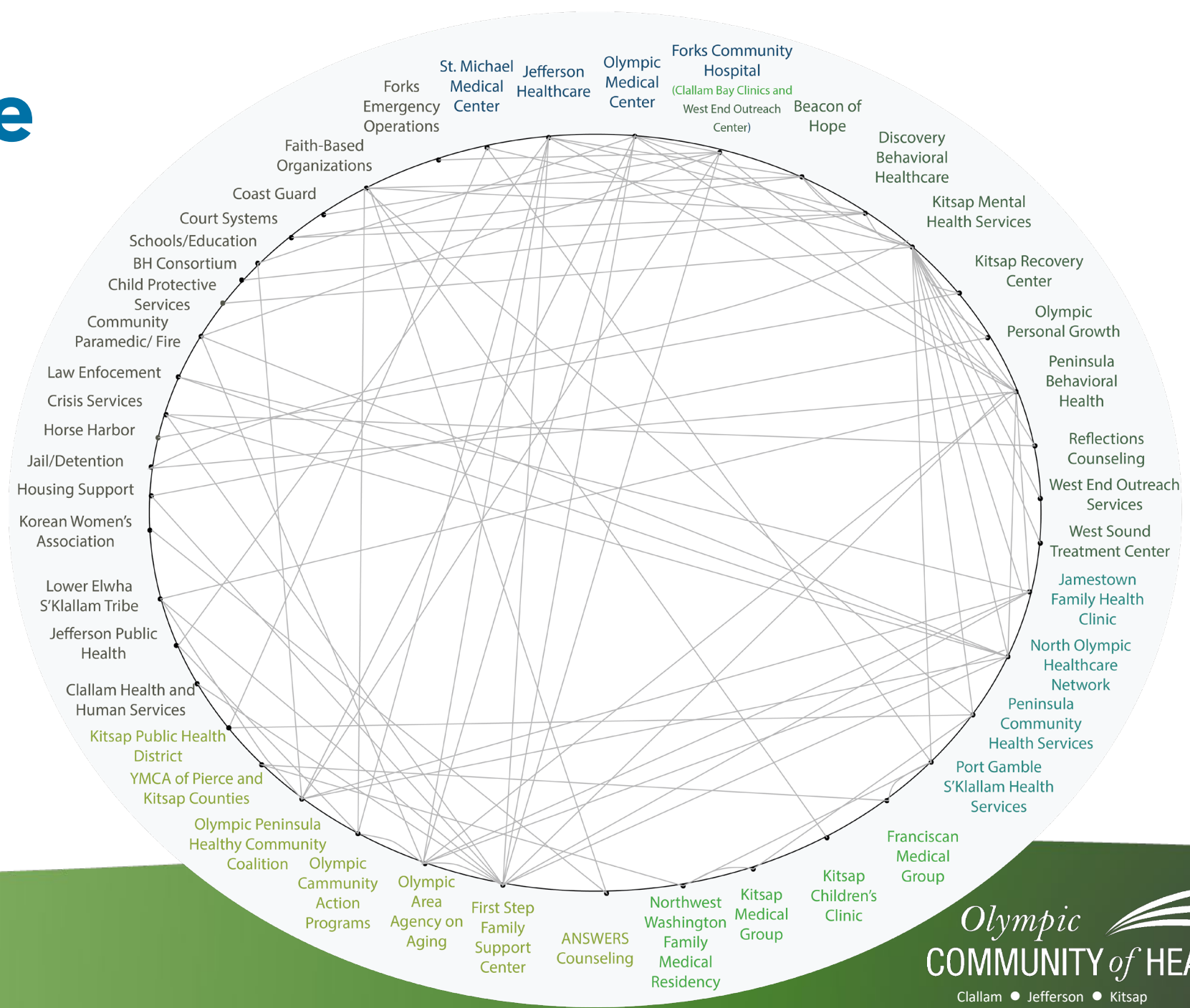






Big Picture

OCH implementation partners have submitted CCL project proposals that include **over 70 connections** across the Olympic region.



Implementation partner project summary

Theme	Project	Project Lead
BH integration	BH integration into rural health clinics	Forks Hospital, Bogachiel & Clallam Bay Clinics, and West End Outreach Services
BH integration	BH integration into children's clinic	Kitsap Children's Clinic
BH integration	BH integration in Emergency Department	St. Michael Medical Center
BH support	Equine therapy for inpatient patients	Kitsap Recovery Center
BH support	Social isolation: identifying patterns, creating linkages, and addressing	Olympic Area Agency on Aging
BH support	Overcoming Barriers: Minimum level of care in client files	West Sound Treatment Center
BH support	Community re-integration for clients in jail	Peninsula Behavioral Health
Bi-directional referrals	MAT enhancements through integration	Discovery Behavioral Healthcare and Beacon of Hope
Bi-directional referrals	Bidirectional referral systems for low income pregnant and parenting women	First Step Family Support Center
Bi-directional referrals	Bidirectional referral systems (YMCA and CHI)	YMCA of Pierce and Kitsap Counties, NW Family Medicine Residency, Franciscan Medical Group
Bi-directional referrals	Community social navigator program	Jamestown Family Medical Center
Care coordination	Chronic care coordination	Kitsap Medical Group
Care coordination	Clallam care connection	North Olympic Healthcare Network
Care coordination	Stand By Me: Care coordination for high utilizers	Peninsula Community Health Services
Care coordination	Tribal Medicaid FQHC provider network expansion	Port Gamble S'Klallam Tribe
Healthy eating	5210 campaign and SDOH screening model	Olympic Peninsula Healthy Community Coalition
Healthy eating	5210 campaign in schools	Olympic Medical Center
Housing	Tiny homes for seniors	OlyCAP
Housing	Sober housing services for clients	Olympic Personal Growth
Parenting support	Group Parenting Programs	ANSWERS Counseling
Screening and assessment	New Journey's: Early psychosis EBP	Kitsap Mental Health Services
Vaccine distribution	COVID vaccine distribution	Jefferson Healthcare



Stay connected!

Want to join our mailing list?

olympicch.org

or email: OCH@olympicch.org

Find us on social media   